
AUTOMOBILE

Vol. 2  1924

GREEN BOOK

New York, Pennsylvania, Canada
New Jersey, Maryland, Delaware
District of Columbia, Florida
Trunk Lines East and West

OFFICIAL NAME BOOK OF
THE AUTOMOBILE LEGAL ASSOCIATION
PUBLISHED BY
S. S. KNOX, INC., NEW YORK, N. Y.

Price \$3.00

BLUE RIBBON Auto Specialties

The quality of Blue Ribbon specialties is proved by their popularity with experienced garage and repair men.

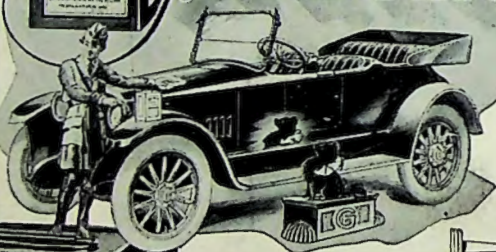
Try Blue Ribbon Automobile Body Gloss. When not convenient to get garage service, you can, with these products, take complete care of your car yourself—at low cost.

Sold by all dealers

Manufactured by
International Metal Polish Co.
1920 State Street, Indianapolis, Ind.

KEEP THE BODY OF YOUR CAR SHINING

BLUE RIBBON Automobile Body Gloss



BLUE RIBBON

- Auto Top and Seat Dressing
- Radiator Leak-proof Cement
- Lighting Carbon Remover
- Liquid Radiator Cement
- Black Gloss Enamel
- Cream Metal Polish
- Cold Cream Hand Soap
- Graphite Springs Oil
- Gasket Shellac
- Auto Body Gloss
- Self-Curing Natural Rubber Repair
- Nickel Polish
- Hold-on Patch
- Oil Soap



DOUBLES THE LIFE OF TIRES AND ALL RUBBER GOODS



AUTOMOBILE GREEN BOOK

VOL. 2



1924

Official Touring Guide
**NEW YORK STATE AUTOMOBILE
ASSOCIATION**

New York, New Jersey, Pennsylvania,
Maryland, Delaware, District of Columbia,
Central Canada and Florida, with Trunk
Lines to New England and the West.

Price \$3.00

Published by
SCARBOROUGH MOTOR GUIDE COMPANY
Indianapolis, Ind. Boston, Mass.

Copyright 1924, Scarborough Motor Guide Co.

HOW TO USE THE AUTOMOBILE GREEN BOOK

*Read carefully so that you may
use the book to the best advantage*

- FIRST:** Refer to the general index map in the back of the book and locate your starting point and destination. Arrows show the direction of the route. On the reverse of the folded map is a key map showing numbers and terminals.
- SECOND:** If unfamiliar with the location on folded index map refer to Index of Cities and Towns beginning on page 877. If the town is on the index map its location will be shown by key letter and number.
- THIRD:** If town is not on the map, but is on a charted route, the numbers of the routes are given in the Index of Cities and Towns. By referring to the key map on reverse of folded map you will find the terminals of each route.
- FOURTH:** Turn to the route number in the book for complete running directions.

TABLE OF CONTENTS

HOW TO USE THE AUTOMOBILE GREEN BOOK	Above
Read carefully as it will be found very simple, if used correctly.	
GENERAL MAP	Back of Book
This folded map shows the cities and towns with their correct geographical location. On the reverse is shown the outline map of all routes, and detail maps of Delaware, Florida and portions of Ontario and Quebec.	
INDEX OF CITIES AND TOWNS	Page 877
This index contains all cities and towns through which the various routes pass. Shows also the terminals of all trips. Under the town name is given a classified list of the advertisers. Immediately after the town name is given the key letter and number showing the location on the general map.	
NEW YORK STATE AUTOMOBILE ASSOCIATION	16, 17
FERRY SCHEDULES	798
ABSTRACT OF AUTOMOBILE LAWS	800
SECTIONAL MAPS	808
PERSONALLY CONDUCTED TOUR TO THE SOUTH	8
ALEXANDRIA BAY, Illustrated	10

NATIONAL ADVERTISERS

STANDARD OIL CO. OF NEW YORK, Pages 44, 64, 97, 121, 145, 179, 223, 260, 322, 358, 404, 460, 517, 593, and preceding general map.	
INTERNATIONAL METAL POLISH CO.	Inside front cover
CLYDE LINE	5
EMPIRE TOURS	3
GULF REFINING COMPANY	876

CLYDE LINE

to Florida

On your trip South this year take your car and travel by Clyde Line. Your automobile can be placed on board at New York and rolled onto the dock immediately upon your arrival at

CHARLESTON, S. C.

or

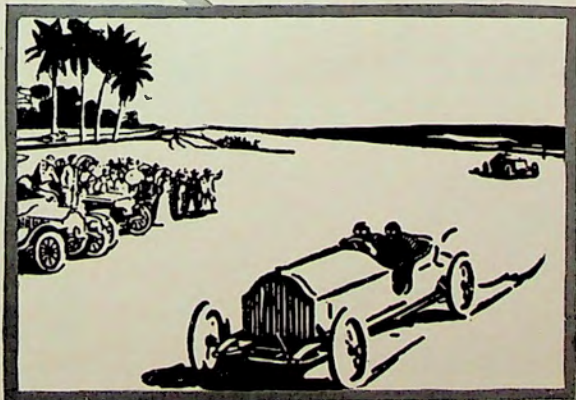
JACKSONVILLE, FLA.

Good roads lead from these centers to all points throughout the Carolinas, Georgia and Florida.

The modern, oil-burning steamers of the Clyde Line offer every comfort and luxury. Bedrooms with double or twin beds and private bath, rooms en suite or single with private lavatory; family rooms accommodating 2, 3 or 4 persons; or other staterooms in special or preferred location, are available at rates varying in accordance with accommodations selected.

For rates, reservations, etc., address

A. W. PYE, Passenger Traffic Manager
Pier 36, North River, New York



Automobile Green Book Tour to Florida



Personally
conducted

BOSTON, MASS., to JACKSONVILLE, MIAMI and ST. PETERSBURG, FLA.

Leaving Boston, December 3, 1924—Arriving at Jacksonville,
December 16, Miami and St. Petersburg, December 19.

THE marked success of the last four annual Automobile Green Book Tours to the Southland insures that subsequent tours will be well managed and thoroughly enjoyable. They are not an experiment but have demonstrated that owners may drive their own cars over the road and stop at the best hotels en route at a cost below that of transportation of car and passengers by rail or boat. Records of costs have been kept so that it is possible before the start for each entrant to know almost exactly the total cost of the trip.

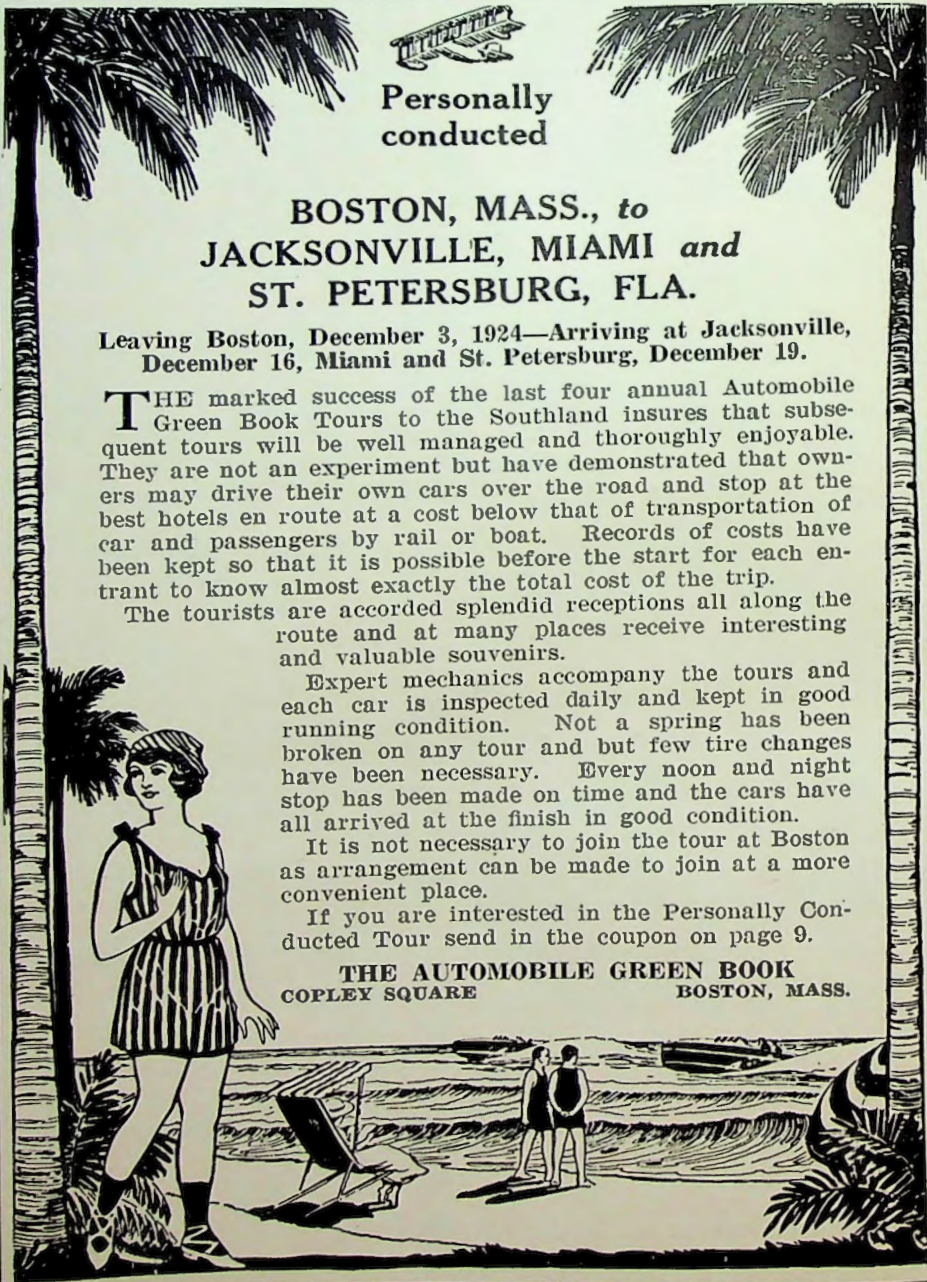
The tourists are accorded splendid receptions all along the route and at many places receive interesting and valuable souvenirs.

Expert mechanics accompany the tours and each car is inspected daily and kept in good running condition. Not a spring has been broken on any tour and but few tire changes have been necessary. Every noon and night stop has been made on time and the cars have all arrived at the finish in good condition.

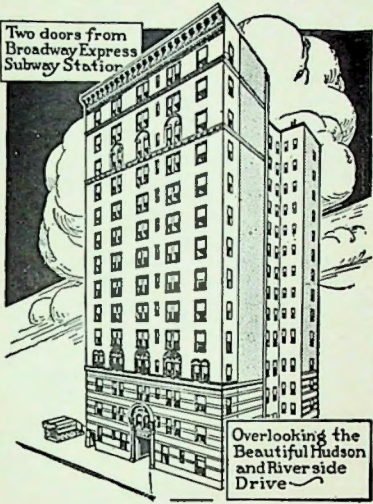
It is not necessary to join the tour at Boston as arrangement can be made to join at a more convenient place.

If you are interested in the Personally Conducted Tour send in the coupon on page 9.

THE AUTOMOBILE GREEN BOOK
COPLEY SQUARE BOSTON, MASS.



Two doors from
Broadway Express
Subway Station



Overlooking the
Beautiful Hudson
and Riverside
Drive

HOTEL ALEXANDRIA

250 West 103rd St., New York City
Between Central Park and Hudson River

SINGLE ROOM WITH PRIVATE BATH
\$3.00 AND UP

DOUBLE ROOM WITH PRIVATE BATH
\$4.00 AND UP

Other suites in proportion. Also
a few desirable unfurnished
apartments on yearly lease.

HOTEL ST. FRANCIS
22-24 E. Park St.
Newark, N. J.

Special attention given to ladies
travelling alone.

Exceptional Restaurant at very moderate prices. S. L. ROOT, Manager

APPLICATION

AUTOMOBILE GREEN BOOK TOUR TO FLORIDA

The Automobile Green Book,

COPLEY SQUARE, BOSTON 17, MASS.

I wish information regarding the Personally Conducted Tour.

My destination in Florida is

My car is a Model Year

Will have persons in my party.

My address is

My telephone number is

Signed

THE THOUSAND ISLANDS AS SEEN FROM ALEXANDRIA BAY

PRESENT

A Panorama of Splendor

Such as is rarely one's good fortune to witness.

A DEVIATION OF HUNDREDS OF
MILES

ON THE
ROOSEVELT
HIGHWAY

from your intended route will be amply
repaid by one glimpse of these, the

Most Beautiful of Islands

ON THE
CANADIAN
BORDER

NOWHERE ELSE DO THEIR LIKE EXIST

Unique Charming Inspiring

EVERY ACCOMMODATION FOR DISCRIMINATING GUESTS

Splendid hotels, rooming houses and restaurants. Spacious modern garages.

All the attractions of a modern summer resort.

FISHING — BOATING — SWIMMING — FLYING

A beautiful booklet supplied free

CHAMBER OF COMMERCE, Room 2, Bank Building.

ALEXANDRIA BAY, N. Y.—To which all roads are MACADAM

The Automobile Green Book PUBLICATIONS

THE EASIEST TO READ—THE MOST COMPLETE
AND ACCURATE GUIDE BOOKS PUBLISHED

The official publication of the leading Automobile Clubs and
Associations in the United States and Canada

Volume 1 This volume covers New England, the Maritime Provinces and trunk lines west through Buffalo to Chicago. Main touring lines in New York, New Jersey, Pennsylvania, Delaware and Maryland.

Volume 2 Covers New York, New Jersey, Pennsylvania, Maryland, Delaware, District of Columbia, Central Canada and Florida and trunk lines to New England and the West.

Volume 3 Covers Indiana, Illinois, Ohio, Wisconsin and Michigan, with trunk lines to Southern and Eastern Resorts.

The large number of sectional and city maps contained in these books enables the motorist to easily find any route he may desire.

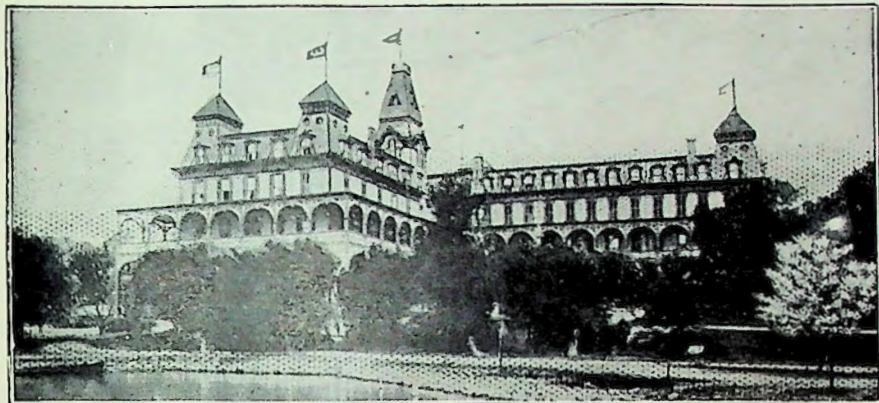
Price per Volume \$3.00

Published by

SCARBOROUGH MOTOR GUIDE CO.
BOSTON, MASS. INDIANAPOLIS, IND.

The Crossmon

ALEXANDRIA BAY, - - - NEW YORK
1000 ISLANDS



150 Rooms—75 With Private Bath
IN THE HEART OF THE THOUSAND ISLANDS
ALL STATE ROADS LEAD TO THE DOOR
Reasonable Rates to Tourists

B. W. FREEMAN — Owners and Proprietors — C S. THOMSON

THOMSON & BRITTONS FIREPROOF GARAGE
STORAGE, REPAIRS AND ACCESSORIES

CAPT. THOMSON'S MOTOR BOATS

FOR THE TOUR OF THE ISLANDS—Known from Coast to Coast
Both run in connection with the Crossmon House
ROCKWELL HOUSE, GLEN FALLS, N. Y.—Under Same Management.

WENDELL HOTEL

PITTSFIELD, MASS.

European Plan, Fireproof, Modern

IN THE HEART OF THE BERKSHIRE HILLS

THE WESTERN GATEWAY OF THE MOHAWK,
BERKSHIRE'S TRAILS AND JACOB' LADDER

N. A. CAMPBELL, President and Manager



THE AUTOMOBILE LEGAL ASSOCIATION

ORGANIZED 1907

New Jersey Office—Chamber of Commerce Building, Newark, N. J.

LEGAL DEPARTMENT

Defense when charged with—Any violation of the automobile laws (except driving while under the influence of intoxicating liquor), including:

- Over-speeding.
- Failure to slow down and give a timely signal.
- Cutting corners.
- Allowing an automobile to be parked beyond the time limit.
- Allowing an automobile to smoke excessively.
- Alleged reckless driving.
- Alleged driving to endanger the lives and safety of the public.
- Going away without making oneself known after causing damage.
- Making an unnecessarily harsh noise with a horn or other device.
- Violation of city and town traffic rules.
- Violation of rules and regulations of Park Commissioners.

Defense when sued, for damage to the property of another.

Legal advice, in any matter in which members are interested as automobilists, including:

- Threatened suits.
- Criminal complaints.
- Laws relating to building of garages.
- Interpretation of contracts.
- A member's rights under a conditional bill of sale.
- Claims of members against third parties.

76% of our cases were won last year.

TOURING DEPARTMENT

New England and New Jersey members receive a copy of the A. L. A. Green Book covering their territory.

Ohio members receive detailed maps covering their territory.

In addition, upon request, information regarding:

- Road conditions and detours.
- Hotels and garages.
- Camp Sites.
- Automobile laws of other states, etc.

This department will prepare itineraries and routes for any trip desired.

We planned trips covering over 10,000,000 miles of road last year.

OFFICIAL MAGAZINE

The Automobilst, published monthly, fully illustrated, contains:

- Touring information and up-to-the-minute automobile articles.
 - New laws, legislation and court decisions.
 - New automobile accessories and motor cars.
 - Road conditions and detours.
 - A complete and revised list of our attorneys and official garages.
-

GARAGE SERVICE

Emergency road service rendered to our members within a radius of ten miles from any of our official garages at our expense, including such service as the repair of:

- Broken springs.
- Broken steering gear.
- Clutch trouble.
- Brake trouble if the car cannot be safely operated.
- Broken wheels.
- Ignition trouble.
- Battery trouble.
- Bringing gasoline and oil.
- Changing tires.
- Troubles that prevent the car from being operated under its own power.

If repairs cannot reasonably be made upon the road the member can be towed to our nearest official garage at our expense.

The cost of parts or other accessories, and labor performed in a garage is not paid for by us.

Over \$80,000 paid last year to our 1700 garages rendering this service to our members.

EMBLEM

The nickel and blue emblem is known to all and its presence on any car accords its owner many courtesies and privileges not otherwise enjoyed.

FEE

The \$10 membership fee covers one car and entitles the member to any or all of the foregoing service. The membership runs for one year from the date it is taken out. There are no additional fees or assessments whatever.

NEW YORK CITY SECTION

ROUTE 1

NEW YORK CITY TO POUGH-
KEEPSIE—73.7 Miles.

Via Peekskill

Reverse Route 142

All bitulithic, concrete, brick and
wood block. Pole markings—
Blue.

- 0.0 **NEW YORK CITY.** Columbus
Circle. Broadway and 50th St.
Go north on Broadway.
- 0.8 72nd St. Subway Sta. on left.
Turn left on 72nd St.
- 1.0 End of street; turn right on
Riverside Drive. Hudson River
at left.
- 1.9 Soldiers' and Sailors' Monument
on left.
- 3.5 Fork, Grant's Tomb ahead; bear
right with Drive.
- 5.4 At 158th St., turn left on River-
side Drive Extension.
- 8.1 Five corners, meeting trolley:
bear left on Broadway.

- 9.1 Cross drawbridge over Harlem
Ship Canal.
- 9.3 Four corners; turn left on 230th
St.
- 9.7 End of street; turn right on
Riverdale Ave.
- 13.6 **Yonkers.** Straight ahead on
Warburton Ave., passing Phil-
ipse Manor on left.
- 18.1 **Hastings on Hudson.** Irregular
four corners; turn left on
Broadway.
- 18.9 Fork; bear left.
- 19.3 **Dobbs Ferry.** Straight ahead.
- 19.5 Water trough on right; turn
left on Broadway.
- 21.3 **Irvington.** Straight ahead.
- 23.9 **Tarrytown.** Broadway and Main
St. Straight ahead.
Florence Inn
(Left downgrade for Nyack
Ferry.)
- 24.6 **No. Tarrytown.** Irregular four
corners; bear left downgrade,
passing church on right.

POUGHKEEPSIE'S LEADING HOTEL

Nelson HousePOUGHKEEPSIE
NEW YORK

Half Way Between New York and Albany

E. P. COUGHLAN, Proprietor

CLINTON BARNARD, Manager



On Empire Tours—AMERICAN PLAN: \$5.00 per Day and Up
THE POMFRET (Under Same Management)—European Plan: \$1.50 per Day and Up
NELSON HOUSE GARAGE, Absolutely Fireproof—Capacity 300 Cars

NEW ENGLAND SECTION

ROUTE 901

DANBURY, CONN. TO WINSTED—49.0 Miles.

Via New Milford and Torrington.

Reverse Route 928

Gravel, macadam and concrete.
Pole markings—Blue.

- 0.0 **DANBURY.** Main, West, and Liberty Sts. Go north on Main St.
- 0.2 Turn right on White St.
- 0.4 Cross railroads.
- 1.4 Diagonal corners; bear left.
- 2.0 **Beaver Brook.** Fork; bear left.
- 2.3 Bear left under railroad, then right.
- 4.7 Fork; bear left.
- 7.9 **Brookfield.** Straight ahead.
- 12.1 **Lanesville.** Go downgrade and turn left.
- 14.7 End of road; turn right across bridge over Housatonic River.
- 15.0 **New Milford.** Top of grade; turn left on Main St.
- 15.2 At Lincoln monument; turn right on Elm St.
- 15.4 Bear left, and pass cemetery on right.
- 19.0 **Northville.** P. O. on left; straight ahead.
- 21.6 **Marble Dale.** P. O. on left; straight ahead.
- 22.6 **New Preston (outskirts).** Fork; bear right upgrade.
- 24.4 Fork; bear left.
- 25.6 Fork; bear right.
- 26.7 Four corners; turn right downgrade, across bridge.
- 29.4 End of road; turn right.
- 30.9 **Bantam.** Straight ahead.
- 34.1 Fork; bear left along green.
- 34.3 **Litchfield.** Turn left between parks, then right.
- 34.4 Turn left around church.
- 39.6 End of street; turn right across railroad on Litchfield St.
- 39.8 End of street; turn left on Main St.
- 39.9 **Torrington.** At square; keep left with trolleys on Main St.
- 41.2 **Right hand road; bear right on concrete.**
- 43.7 Cross railroad.
- 45.0 **Burrville.** Straight ahead.
- 48.7 Under railroad, now on Rowley St.
- 49.0 **Winsted.** Main and Rowley Sts.

ROUTE 902

DANBURY, CONN. TO WATERBURY—31.0 Miles.

Via Newtown and Southbury.

Reverse Route 938

All tarred macadam and state gravel. Pole markings—Red.

- 0.0 **DANBURY.** Main, West and Liberty Sts. Go north on Main St.
 - 0.2 Turn right on White St.
 - 0.4 Cross railroads.
 - 1.3 Cross viaduct over railroad.
 - 1.4 Diagonal corners, bear left.
 - 2.0 **Beaver Brook.** Fork; bear right.
 - 2.1 Cross bridge.
 - 7.2 Taunton Lake on right.
 - 9.0 **Newtown.** Four corners, at flagpole; turn left.
 - 9.3 At water trough; bear left.
 - 9.7 Under railroad.
 - 10.5 **Sandy Hook.** Cross bridge and turn left.
 - 11.9 Under railroad.
 - 12.1 Cross bridge and turn right.
 - 12.3 Bear left under railroad.
 - 16.5 **Southbury.** Straight ahead.
 - 19.5 Irregular four corners; turn right.
 - 23.0 Under railroad.
 - 23.5 Lake Quassapaug on left.
 - 25.3 **Middlebury.** Four corners, West-over School on right; straight ahead.
 - 26.5 Under railroad.
 - 29.4 Fork; bear right; leaving trolley.
 - 30.3 Cross iron bridge over Naugatuck River. Now on W. Main St.
 - 31.0 **Waterbury.** Center Square.
- ROUTE 903**
- DANBURY, CONN. TO NORWALK—21.8 Miles.**
- Reverse Route 943
- Macadam and gravel. Pole markings—Blue.
- 0.0 **DANBURY.** Main, West and Liberty Sts. Go westerly on West St.
 - 0.3 Green in fork, bear left and at end of green; turn left on Division St.
 - 0.5 Bear right on Park St., leaving trolley.
 - 1.2 Trolley comes from left.
 - 1.7 Fork; bear left with trolley.
 - 2.6 Left hand road, cemetery on left; turn left.

- 6.0 Diagonal road, sign "Ridgefield"; bear left.
 10.4 **Branchville.** Station on right; straight ahead.
 11.1 Right hand road; turn right.
 14.1 **Cannondale.** Straight ahead.
 16.2 **Wilton.** Cemetery on left; straight ahead.
 18.1 **So. Wilton.** Small store on right; straight ahead.
 19.8 Meet and follow trolley.
 21.8 **Norwalk.** Main and Wall Sts.

ROUTE 905

DANBURY, CONN. TO NEW YORK CITY—63.4 Miles.

Via Bedford and White Plains.

Reverse Route 11**Bitulithic, macadam and concrete.**

- 0.0 **DANBURY.** Main, West and Liberty Sts. Go westerly on West St.
 0.3 Green in fork; bear right on West St.
 0.6 **Three corners, at water trough;** bear left.
 0.7 Under railroad, on Lake Ave.
 2.7 End of road, cemetery on left; bear right.
 2.9 Cross railroad.
 3.9 **Mill Plain.** Turn left.
 4.1 Cross bridge over railroad, and bear right at fork.
 6.5 Cemetery on left; bear left.
 6.9 School on right; bear right.
 11.8 **North Salem, N. Y.** Three corners; turn left.
 12.6 Turn left across bridge, then right.
 17.9 Four corners; turn right.
 18.7 **Cross River.** Left hand road. Turn left.
 23.3 **Irregular four corners.** Turn left.
 23.5 **Bedford.** Fork; bear right, passing cemetery on right.
 28.8 **North Castle.** Straight ahead.
 31.3 **Armonk.** Church on corner; turn left.
 32.8 End of road; turn left and cross concrete bridge.
 33.1 **Four corners; turn right.**
 34.5 Turn right and cross long bridge.
 36.0 Cross bridge and go under railroad.
 36.9 **Valhalla.** Straight ahead.
 37.8 **Castle Heights.** Straight ahead.
 39.2 **White Plains.** Broadway and Main St., at fountain; turn right on Main St.
 39.7 Cross, then soon go under railroad.

- 39.8 Turn right with trolley on Central Ave.
 40.2 Bear left with Central Ave., at water trough; leaving trolley.
 41.9 **Harts Corners.** Straight ahead.
 46.9 Cross trolley and Tuckahoe Road.
 49.4 Cross trolley and Yonkers Ave. Now on Jerome Ave.
 52.4 Diagonal road, cemetery on left; bear right with Jerome Ave.
 53.1 Four corners, end of elevated; turn left, leaving trolley.
 53.2 Turn right on Grand Boulevard and Concourse.
 57.4 At monument; bear left on Mott Ave.
 58.1 Meeting trolley; turn right on 149th St. and cross bridge over Harlem River, coming on 145th St.
 58.8 Turn left on 7th Ave.
 60.5 Enter Central Park and immediately bear right.
 60.7 Curve left.
 61.1 Cross stone bridge and bear right.
 61.7 Reservoir on left.
 62.1 Fork; bear left.
 62.4 Fork; bear left.
 62.6 Webster monument in fork; bear right.
 63.3 Monument in fork; bear right and leave park.
 63.4 **New York City.** Columbus Circle. Broadway and 59th St.

HOTELS

Hotel Alexandria
 Ansonia Hotel
 Hotel Astor
 Belmont Hotel
 The Biltmore
 Hotel Bristol
 Hotel Commodore
 Murray Hill Hotel

GARAGES

Clark & Kendrick, Inc.

OIL PRODUCTS

Standard Oil Co. of New York
STEAMSHIP LINES
 Clyde Line

ROUTE 906

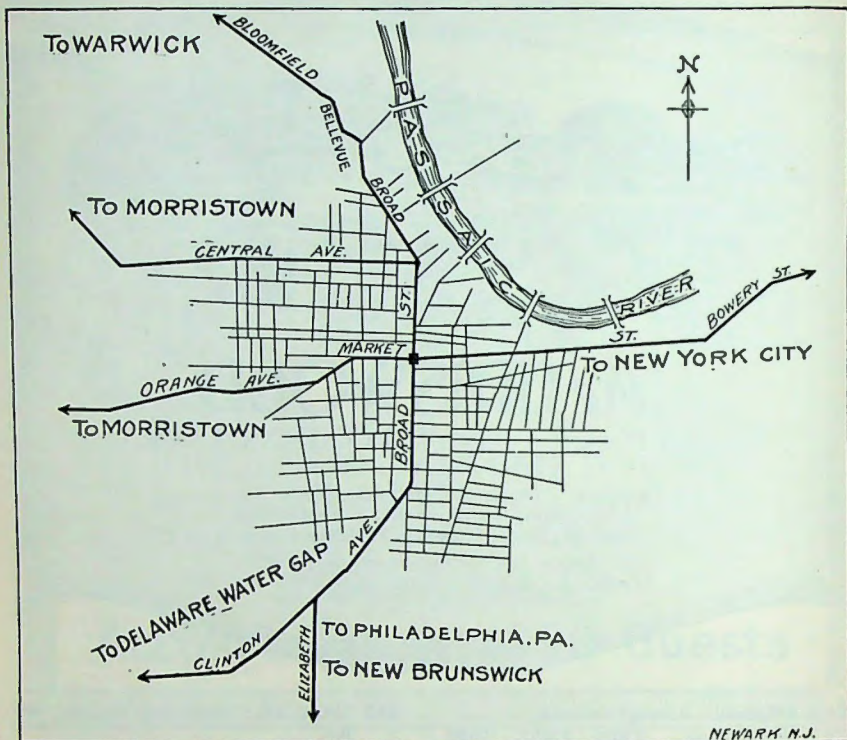
DANBURY, CONN. TO NEW YORK CITY—62.6 Miles.

Via Ridgefield, Bedford and Tarrytown.

Reverse Route 12**All bitulithic, macadam, brick and concrete.**

- 0.0 **DANBURY.** Main, West, and Liberty Sts. Go westerly on West St.
 0.3 Green in fork; bear left, and at end of green; turn left on Division St.

NEWARK. N. J.



NEW JERSEY SECTION

ROUTE 1100

NEWARK, N. J. TO PORT
CHESTER, N. Y.—49.3 Miles.

Via Nyack.

Reverse Route 74

All tarred macadam or concrete.

- 0.0 NEWARK. P. O. on left; go north on Broad St., keeping left of park with latticed flag pole. Later passing under Lackawanna Railroad, still on Broad St.
- 0.9 Prominent square; turn square right with trolley on Clay St., shortly crossing bridge and turning next left on Passaic Ave.
- 3.9 Four corners, with trees; straight ahead, following river.
- 6.3 Three corners, garage ahead; bear right, passing to right of garage.
- 7.0 Lyndhurst. Irregular six corners; wood church ahead on left; straight ahead on Park Ave.
- 8.1 Rutherford. Station ahead; curve right with double trolley and turning sharply next left under railroad. Follow trolley.
- 9.1 Carlstadt. Church on left.
- 9.8 Woodridge. Brick school on left; straight ahead.
- 10.7 Yellow house ahead; curve right on Terrace Ave.
- 12.9 Four corners; turn right down grade on Essex St., shortly crossing railroad.
- 13.4 End of Essex St.; courthouse with dome ahead; turn left on Main St.
- 14.0 Hackensack. P. O. on right; straight ahead
- 14.9 Cross railroad, turning second right on Johnson Ave., leaving trolley.
- 15.7 Right hand road; turn right around red brick garage, shortly curve left and straight through four corners just beyond.

- 17.6 **River Edge.** Fork; keep left, keeping straight ahead at 18.6 on wide road.
- 18.9 **Oradelle.** Concrete garage on right; straight ahead.
- 20.5 **Emerson.** Station on left; cross railroad and go straight ahead.
- 21.6 Brown shingle house ahead on left; turn square left and then square right at railroad.
- 21.9 **Westwood.** Station on left; straight ahead.
- 22.8 **Hillsdale.** Station on left; curve slightly right and then straight ahead
- 24.1 **Woodcliff Lake.** Station on left; straight ahead.
- 24.9 **Park Ridge.** End of road; turn right and immediately bear left.
- 25.5 **Montvale.** Bear left, crossing railroad and turn right, passing station on right
- 26.2 Right hand road; turn right around small house on bank.
- 27.0 Four corners, after passing small pond on right; turn right.
- 27.1 **Pearl River, N. Y.** Cross railroad and go straight ahead upgrade.
- 27.6 End of road; turn left.
- 27.9 **Nanuet.** Fire house on left; curve left, crossing railroad.
- 30.3 Four corners, fire ring on right; turn right.
- 30.7 *Cross railroad, and keep right just beyond.
- 31.9 Keep right.
- 32.9 **W. Nyack.** Cross railroad.
- 33.7 Four corners; straight ahead.
- 35.5 **Nyack.** Main St. and Broadway. Turn right on Broadway, and next left on Bird St. Down steep grade.
- 35.7 Ferry to **Tarrytown.**
- 35.7 Leave ferry on Main St., cross railroad and up steep grade.
- 36.3 **Tarrytown.** Main St. and Broadway; turn right on Broadway.
- Florence Inn
- 37.2 Turn left on White Plains Road.
- 39.6 **Elmsford.** Cross railroad.
- 42.6 Turn left on Main St. and go under railroad, then soon cross railroad.
- 43.0 **White Plains.** Court House on right; straight ahead.
- 43.2 Turn right at watering fountain with trolley on Westchester Ave.
- 47.4 Bear to left and soon cross bridge.
- 48.5 Meet and follow trolley, entering on Westchester Ave.
- 49.3 **Port Chester.** Westchester Ave. and Main St. (Boston Post Road.)

ROUTE 1101

NEWARK, N. J., TO SUFFERN, N. Y.—30.4 Miles.

Via Pompton.

Reverse Route 172

- 0.0 **NEWARK.** Broad and Market St. Go northeast on Broad St.
- 0.2 Park on right.
- 0.8 Under railroad.
- 1.0 Turn left with trolley on Belleville Ave.
- 1.2 Turn left with branch trolley on Bloomfield Ave.
- 3.3 Cross railroad.
- 4.3 **Bloomfield.** Straight ahead across trolley.
- 5.3 Cross railroad viaduct.
- 6.0 **Montclair.** Diagonal four corners; straight ahead.
- 7.0 Straight ahead at curve, leaving trolley.
- 7.1 Garage on left; turn right at four corners.
- 9.2 Under railroad.
- 11.5 **Singac.** Straight ahead, crossing trolley.
- 11.8 Cross railroad.
- 13.7 **Mountain View.** Cross bridge over canal, then railroad.
- 14.5 **Wayne.** P. O. on right; straight ahead.
- 15.8 Bridge a short distance ahead; turn right and pass school, at left.
- 16.4 Curve left.
- 16.8 Bear right.
- 18.4 **Pompton.** Bridge ahead; turn right and pass Pompton Lakes.
- 19.2 Straight ahead downgrade.
- 20.6 Left hand road; turn left, soon passing cemetery.
- 21.7 **Oakland.** Cross railroad.
- 29.5 Under railroad and turn left across trolley, also New Jersey-New York state line.
- 29.6 Turn left on Orange Ave.
- 30.4 **Suffern, N. Y.** At railroad.

ROUTE 1102

NEWARK, N. J., TO SUFFERN, N. Y.—32.1 Miles.

Via Rutherford and Hackensack.

Reverse Route 173

A very useful connection for motorists wishing to avoid New York City. Asphalt and macadam.

- 0.0 **NEWARK.** Broad and Market Sts. Go north on Broad St.
- 1.0 Straight ahead, leaving trolley.
- 1.9 End of street, cemetery ahead; turn left on Harvey St. and immediately right on Washington Ave.

- 6.7 **Long Valley.** Beyond stone bridge; turn left.
 10.0 **Chester.** (Outskirts.) Four corners; turn left.
 11.3 Turn sharp right away from business center.
 16.1 **Gladstone.** Beyond railroad; turn right.
 16.7 Curve left and at end of road; turn right.
 17.3 **Peapack.** Straight ahead.
 19.5 **Far Hills.** At end of road; turn right.
 20.0 **Bedminster.** Turn left.
 22.3 **Pluckemin.** Straight ahead, coming on Mountain Ave.
 27.8 End of street; turn left on Main St.
 28.2 **Somerville.** Main and Bridge Sts. Turn right on Bridge St.
 31.9 End of road; turn right.
 32.5 Turn left.
 36.2 Cross railroad.
 36.5 **Belle Mead.** Three corners; keep to left.
 37.8 **Harlingen.** Straight ahead.
 38.5 Bear left.
 40.5 **Rocky Hill.** (Outskirts.) Straight ahead.
 45.0 Bear left across trolley.
 45.6 **Princeton.** At park and monument. (Turn right on Stockton St. for Trenton.)

ROUTE 1138

PRINCETON, N. J. TO HACKETTSTOWN—45.6 Miles.

Via Bedminster.

Reverse Route 1136

Macadam and concrete.

- 0.0 **PRINCETON.** At park and monument. Go north.
 0.6 Cross trolley, and at fork; bear right.
 4.1 **Rocky Hill.** (Outskirts.) Straight ahead.
 7.1 End of road; turn right.
 7.8 **Harlingen.** Straight ahead.
 9.1 **Belle Mead.** Three corners; keep to right.
 12.1 End of road; turn right.
 12.7 Turn left, coming on Bridge St.
 17.4 **Somerville.** Bridge and Main Sts. Turn left on Main St.
 17.8 Fork; bear right on West End Ave. and turn next right on Mountain Ave.
 23.3 **Pluckemin.** Straight ahead.
 25.6 **Bedminster.** Turn right on Main St.
 26.1 **Far Hills.** At fair grounds; turn left.
 28.3 **Peapack.** Straight ahead.
 28.9 Turn left and then right.

- 29.5 **Gladstone.** End of road; turn left across railroad.
 34.3 **Chester.** (Outskirts.) End of road; turn sharp left.
 35.6 Four corners; turn right.
 38.9 **Long Valley.** Turn right across stone bridge and up steep grade.
 41.3 **Schooleys Mountain.** Curve right past P. O. and descend long steep grade.
 45.1 End of road, at monument; bear left.
 45.6 **Hackettstown.** High, Main and Hope Sts.

ROUTE 1141

TRENTON, N. J. TO NEW YORK CITY.—54.4 Miles.

Via New Brunswick and Staten Island.

Reverse Route 34

Concrete and macadam.

- 0.0 **TRENTON.** State and Warren Sts. Go north on Warren St.
 0.5 Turn right, then left at Washington Monument on Brunswick Ave. and continue on same out of city.
 1.2 Meet and parallel trolley 6.3 miles.
 6.1 **Lawrenceville.** Turn left.
 10.1 **Slow.** Dangerous curves left, then right. Enter Princeton on Nassau St.
 11.6 **Princeton.** Continue on Nassau St. P. O. on left.
 14.5 Cross bridge, then railroad.
 14.8 **Kingston.** Straight ahead.
 21.3 **Franklin Park.** Straight ahead.
 22.5 Cemetery on right.
 25.3 Cross railroad. Meet and follow trolley.
 27.6 Go under railroad.
 27.8 **New Brunswick.** Intersection of George and Albany Sts. P. O. on southwest corner. Straight ahead on Albany St.
 28.1 Cross bridge over Raritan river, then up hill. Albany St. now becomes Raritan Ave. **Highland Park.**
 32.5 Continue straight ahead.
 32.8 Under viaduct.
 33.1 *Turn left across viaduct, then turn right.
 33.4 **Metuchen.** (Main part of village lies to left.) Continue straight ahead and follow trolley to 36.3.
 34.2 *Cross trolley.
 35.9 **Fords.** Straight ahead.
 36.3 Straight ahead, leaving trolley. Enter on New Brunswick Ave.
 38.2 *Cross railroads, then turn first right on Prospect St.

- 38.4 Coming to trolley, turn left on Smith St.
- 38.5 ★Cross railroads.
- 38.9 **Perth Amboy.** At five points. Continue straight ahead on Smith St.
- 39.1 Take ferry across to Staten Island. Leaving ferry go straight out Bentley St. to end.
- 39.5 End of street. Turn left on Amboy Road and follow same to New Dorp.
- 39.6 **Tottenville, N. Y.** Straight ahead.
- 41.6 **Pleasant Plains.** ★Cross railroad, then curve right.
- 42.5 **Prince Bay.** Straight ahead.
- 43.1 **Huguenot.** Straight ahead.
- 43.8 **Annadale.** Keep right fork.
- 45.2 ★Slow. Bad curve to left, then right.
- 45.8 **Gifford.** Under viaduct.
- 47.2 ★Slow. Turn right, then curve left.
- 48.3 **New Dorp.** ★Bear right on Richmond Rd. Cross trolley track, then follow asphalt between trolleys.
- 48.7 ★Slow around curves. Cemetery on left.
- 49.7 **Staten Island Fair Grounds** on right.
- 51.7 Bear to right on Vanderbilt Ave., leaving trolleys.
- 52.7 End of street. Turn left on Bay St. Follow trolleys.
- 53.1 **Stapleton.** City Park on left.
- 53.8 **Tompkinsville.** Bear right with trolleys at water trough.
- 54.1 **St. George.** Borough Hall on left. Curve right, leaving trolleys, and down grade to end of pavement, then left on
- 54.4 **Municipal Ferry,** to New York City.
- 54.4 **New York City.** Foot of Whitehall St.

HOTELS

Hotel Alexandria
Ansonia Hotel
Hotel Astor
Belmont Hotel
The Biltmore
Hotel Bristol
Hotel Commodore
Murray Hill Hotel

GARAGES

Clark & Kendrick, Inc.

OIL PRODUCTS

Standard Oil Co. of New York

STEAMSHIP LINES

Clyde Line

When you see the Automobile Green Book sign on hotel or garage you may be sure you will receive courtesy and proper treatment.

ROUTE 1142

TRENTON, N. J., TO ASBURY PARK, N. J.—46.0 Miles.

Via Mercerville, Hightstown, Freehold and Farmingdale.

Reverse Route 1163

One-third macadam, balance gravel.

- 0.0 **TRENTON.** Broad and State Sts. Go east on State St., immediately passing church (at left).
- 0.1 P. O. on left.
- 0.2 **City Hall** on right. ★ Cross bridge over canal, then railroads.
- 0.7 Viaduct over railroads.
- 2.0 Double trolley ends. Follow single trolley one long block.
- 2.1 Turn right at four corners on Clinton Ave.
- 2.6 ★ Cross trolleys and straight ahead. (Fair grounds at left.)
- 4.3 **Mercerville.** Cross trolley and straight ahead.
- 5.6 ★ Cross trolley.
- 8.5 **Edinburg.** After crossing bridge turn right at irregular four corners.
- 8.7 ★ Curve left.
- 10.7 **Windsor.** ★ Cross railroad (in cut) and turn left.
- 13.2 ★ Cross railroad.
- 14.2 **Hightstown.** Pass fountain watering trough (at right) in reverse fork and bear left on Main St.
- 14.4 Under viaduct and go to first right.
- 14.5 Turn right.
- 19.9 ★ Curve right, then turn left across bridge.
- 20.1 **Bergen's Mills.** Straight ahead.
- 21.3 **Manalapan.** Straight ahead.
- 24.2 **Black Mills.** Straight ahead.
- 27.6 End of Manalapan St. Turn left on Main St.
- 27.9 ★ Cross railroad.
- 28.0 **Freehold.** Court House on left. Main and South Sts. at post with two lamps. Turn right on South St.
- 31.4 **Adelphia.** Straight ahead. (Turn right for New York.)
- 33.1 **Ardena.** Church on right. Straight ahead.
- 33.7 Keep to left.
- 35.7 ★ Cross railroad.
- 36.1 End of road; turn right.
- 36.3 **Farmingdale.** Church on right at three corners. Turn left.
- 38.2 ★ Curve right, then soon cross railroad.
- 40.6 ★ Curve right.
- 41.7 **Hamilton.** Straight ahead.
- 42.9 Curve left, then soon between church and cemetery.

- 43.7 Curve left.
 44.7 Enter on Corlies Ave.
 45.6 ★ Cross railroads, then at end of street; turn left on Main St.
 45.8 Ocean Grove. High School on right.
 46.0 Asbury Park. Main St. and Cookman Ave. Depot just ahead at left.
 New Monterey Hotel

ROUTE 1143

TRENTON, N. J., TO ASBURY PARK.—43.2 Miles.

Via Hightstown and Jerseyville
 Reverse Route 1164
 Macadam and gravel.

- 0.0 TRENTON. Broad and State St. Go east on State St.
 0.2 City Hall on right. Cross canal bridge, then railroads.
 0.7 Cross viaduct over railroads.
 2.0 Double trolley ends; follow single trolley one long block.
 2.1 Four corners; turn right on Clinton Ave.
 2.6 Fair grounds on left.
 4.3 Mercerville. Cross trolley and straight ahead.
 5.6 Cross trolley.
 8.5 Edinburg. After crossing bridge; turn right at irregular four corners.
 8.7 ★Curve left.
 10.7 Windsor. ★Cross railroad (in cut) and turn left.
 13.2 Cross railroad.
 14.2 Pass fountain water trough, and bear left on Main St.
 14.4 Under viaduct.
 14.5 Hightstown. Monmouth and Main Sts.; turn right on Monmouth St.
 19.9 Curve right, and then turn left across bridge.
 20.1 Bergen's Mills. Straight ahead.
 21.3 Manalapan. Straight ahead.
 24.2 Black Mills. Straight ahead.
 27.6 End of Manalapan St.; turn left on Main St., and immediately right on Lincoln St.
 27.9 Freehold. Lincoln and South Sts.; turn right on South St.
 28.0 Left hand street; turn left on Institute St.
 29.6 Bear slightly right, through diagonal four corners.
 30.6 Jerseyville. Five corners; straight ahead.
 35.6 Cross railroad.
 38.7 Hamilton. Straight ahead.
 39.9 Curve left, then soon between church and cemetery.
 40.7 Curve left.

- 41.7 Enter on Corlies Ave.
 42.6 Cross railroads.
 42.8 Ocean Grove. End of street, meeting trolley; turn left on Main St.
 43.2 Asbury Park. Main St. and Cookman Ave.
 New Monterey Hotel

ROUTE 1144

TRENTON, N. J. TO ATLANTIC CITY—75.4 Miles.

Via Bordentown, Mt. Holly and Hammonton.

Reverse Route 1185

Macadam, gravel and concrete.

- 0.0 TRENTON. State and Broad Sts. Go south on Broad St.
 0.5 Bear left with trolley and cross bridge over canal.
 0.9 Cross railroad.
 3.9 White Horse. Irregular four corners; turn right.
 6.0 End of road; bear right coming on Park St.
 7.0 Bordentown. Farnsworth Ave. and Park St. Turn left on Farnsworth Ave.
 8.0 Fork; bear right.
 12.2 Columbus. Straight ahead.
 12.6 Cross railroad.
 15.9 Four corners; turn right.
 19.2 Four corners; turn left on Main St.
 19.3 Mt. Holly. Mill and Main Sts. Turn right with trolley on Washington St.
 19.5 Cross railroad.
 19.6 Left-hand street; turn left on Madison Ave.
 19.7 Cross railroad; station on left.
 21.1 ★Cross railroad.
 21.4 Lumberton. Four corners; straight ahead.
 25.8 Cross railroad.
 26.3 Medford. Main and Union Sts. Straight ahead on Main St.
 34.5 Indian Mills. Straight ahead.
 35.3 Four corners; turn left.
 38.5 Atsion. Straight ahead.
 38.8 ★Cross two railroads.
 45.7 Hammonton. (Outskirts.) End of road; turn left on concrete.
 57.4 Egg Harbor City. Straight ahead across Liverpool Ave. (Turn right for Cape May City.)
 68.9 Absecon. Main St. and New Jersey Ave. Turn right on Main St.
 69.0 Turn left on Absecon Boulevard, going across marshes.
 75.4 Atlantic City. Atlantic Ave. and Ohio St.

ROUTE 1145

TRENTON, N. J. TO PHILADELPHIA, PA.—34.6 Miles.

Via Bordentown, Burlington and Bridgeboro.

Reverse Route 1208

State Road (No. 2). Macadam and concrete.

- 0.0 **TRENTON.** State and Broad Sts. Go south on Broad St.
 0.5 Bear left with trolley, and cross bridge over canal.
 0.9 Cross railroad.
 3.9 **White Horse.** Irregular four corners; turn right.
 6.0 End of road; bear right, coming on Park St.
 7.0 **Bordentown.** Farnsworth Ave. and Park St. Straight ahead on Park St.
 7.1 Turn left on Prince St.
 7.4 At garage; turn right.
 8.4 **Fieldsboro.** Straight ahead.
 9.2 Cross trolley.
 15.8 Cross two railroads, and at end of road; bear right on Broad St.
 16.0 Cross railroad.
 16.4 **Burlington.** Turn right across railroad, passing station on left.
 21.5 **Bridgeboro.** Go through covered bridge, then straight ahead passing P. O. on left.
 25.3 **Cinnaminson.** Four corners: straight ahead.
 28.5 **Parry.** Straight ahead.
 28.7 Cross railroad.
 28.8 Cross trolley.
 30.7 Cross railroad.
 31.2 At library; turn right on Federal St.
 32.5 Cross railroad.
 32.8 **Camden.** Court House on left. Straight ahead on Federal St.
 33.4 Take ferry to **Philadelphia.**
 33.4 Leaving ferry; turn right and left on Market St.
 34.6 **Philadelphia, Pa.** City Hall. Broad and Market Sts.
 Hotel Lorraine
 Hotel Majestic

ROUTE 1147

TRENTON, N. J., TO MORRISTOWN, N. J.—54.5 Miles.

Via Pennington, Flemington, Lamington and Bernardsville.

Reverse Route 1128

Macadam and dirt.

- 0.0 **TRENTON.** Warren and State Sts. Go north on Warren St (A left turn if coming from Philadelphia.)

- 0.3 Cross railroad and bridge.
 0.4 Washington monument on right. Turn left with trolley on Pennington Ave.
 0.5 Cross railroad.
 1.0 Cross railroad.
 1.5 Straight ahead, passing on right of Odd Fellows' Home.
 2.8 **Brookfield.** Straight ahead.
 4.2 **Ewingville.** Straight ahead.
 7.9 **Pennington.** Main St. and Delaware Ave. Straight ahead.
 8.5 Turn left across viaduct over railroads and soon bear right.
 9.9 Go under railroad.
 10.4 **Marshall Corner.** Straight ahead.
 12.6 **Woodsville.** Straight ahead.
 13.6 **New Market.** Straight ahead.
 15.2 **Rocktown.** Bad curves.
 16.8 **Ringoes.** Fork; bear right.
 17.9 **Larison Corner.** Turn left across bridge.
 20.3 **Copper Hill.** Bad curves.
 22.6 Cross railroad.
 22.9 **Flemington.** Main St. and Bloomfield Ave. Straight ahead.
 23.0 Bear to right at monument on Branch St.
 24.5 Turn left.
 24.8 Cross railroad.
 25.4 Turn right across viaduct over railroads.
 25.9 **Flemington Junction.** Cross two bridges and turn left.
 32.5 Cross railroads at station.
 33.0 Bear to right at three corners.
 33.9 **White House.** P. O. on left. Straight ahead.
 34.1 Turn left.
 35.0 Cross bridge and turn right.
 36.3 Four corners; turn left.
 37.9 **Lamington.** End of road. Turn right, then bear to right.
 38.4 Fork; bear left.
 42.2 **Bedminster.** Four corners straight ahead.
 43.0 **Far Hills.** Cross, then parallel railroad to 47.1.
 47.1 **Bernardsville.** Curve right at open square.
 47.7 Four corners; turn left.
 49.1 Turn left at three corners and soon cross bridge.
 53.9 Hospital on right. Enter Morristown on Kemble Ave., which becomes Market St.
 54.5 **Morristown.** At park. Washington, Market and South Sts.

ROUTE 1148

TRENTON, N. J. TO DELAWARE WATER GAP, PA.—74.3 Miles.

Via Flemington, Clinton and Washington.

Reverse Route 213

All macadam, bitulithic and concrete.

- 0.0 **TRENTON.** Warren and State Sts. Go north on Warren St. (A left turn if coming from Philadelphia.)
- 0.3 Cross railroad and bridge.
- 0.4 Washington monument on right. Turn left with trolley on Pennington Ave. (Right at monument, then left for New York.)
- 0.5 Cross railroad.
- 1.0 Cross railroad.
- 1.5 Straight ahead, crossing on right of Odd Fellows' Home.
- 2.8 Brookfield. Straight ahead.
- 4.2 Ewingville. Straight ahead.
- 7.9 Pennington. Main St. and Delaware Ave. Straight ahead.
- 8.5 Turn left across viaduct over railroads and soon bear right.
- 10.4 Marshall Corner. Straight ahead.
- 12.0 Woodsville. Straight ahead.
- 13.0 New Market. Straight ahead.
- 16.8 Ringoes. Fork; bear right.
- 17.9 Larison Corner. Turn left across bridge.
- 20.3 Copper Hill. Bad curves.
- 22.6 Cross railroad.
- 22.9 Flemington. Main St. and Bloomfield Ave. Straight ahead on Main St.
- 23.0 Bear right at monument on Branch St.
- 24.5 Turn left.
- 25.4 Turn right across viaduct over railroads.
- 25.9 Flemington Junction. Cross two bridges and turn left.
- 32.5 White House Station. Cross railroads.
- 33.0 Three corners; bear left. (Road to right for Morristown.)
- 33.2 *Cross railroad.
- 35.2 Potterstown. Straight ahead.
- 37.2 Lebanon. Straight ahead.
- 39.6 Annandale. Straight ahead.
- 41.3 Clinton. Irregular four corners; turn right and cross bridge.
- 46.0 Glen Gardner. Straight ahead.
- 47.0 Hampton. Turn left and go downhill, passing under railroad.
- 48.6 Three corners; turn left.
- 49.0 Turn right.
- 51.4 *Cross railroad, coming on Broad St.
- 51.7 Washington. Straight ahead on Belvidere St. (Left on Washington St. for Easton.)
- 52.5 Four corners; turn right.
- 54.2 Turn left and soon cross bridge.
- 56.3 Turn left.
- 56.4 Cross railroad and soon bridge.
- 56.6 Oxford Valley. Turn right.
- 56.9 Station on right; cross railroad.
- 58.8 Buttzville. Cross bridge and railroad, then straight ahead.
- 60.0 Bridgeville. Straight ahead.
- 61.7 Turn sharp right.
- 65.1 Bear right under railroad.
- 65.8 Delaware. At white church; turn left.
- 65.9 Under railroad.
- 66.0 Right hand road; turn right, and jog left and right on bridge over Delaware River. (Toll 25c.)
- 67.0 End of road; turn right.
- 68.5 Cross railroad.
- 69.0 Portland, Pa. Straight ahead, following main road along Delaware River.
- 69.2 Cross railroad.
- 70.9 Stateford. Straight ahead.
- 71.0 Bear left over railroad.
- 74.3 Delaware Water Gap. At small green.
Kittatlnny Hotel
New Edgewood

ROUTE 1149

TRENTON, N. J. TO LAKEWOOD, N. J.—37.9 Miles.

Via Bordentown and New Egypt.

Reverse Route 1172

Gravel and macadam.

- 0.0 **TRENTON.** Broad and State Sts. Go south on Broad St.
- 0.3 Court House on right.
- 0.9 *Jog left across bridge and railroads, then right. Follow trolley.
- 2.8 Cross trolley.
- 4.0 White Horse. *Turn right, leaving trolley.
- 4.4 Cross bridge and follow trolley.
- 6.1 Curve right with trolley.
- 7.1 Turn left with trolley on Farnsworth Ave.
- 7.3 Bordentown. Turn left at fountain on Crosswicks St.
- 9.0 Bear right.
- 11.0 Chesterfield. Turn left at center of village.
- 13.1 Turn right.
- 16.1 Jacobstown. Straight ahead.
- 17.2 Central. Straight ahead.
- 18.8 *Cross railroad.
- 18.9 New Egypt. Curve slightly left and through village.
- 19.2 End of street. Curve left.
- 19.4 Church on opposite left, at four corners; turn right.

- 23.3 Davisville. Straight ahead.
- 27.2 Cassville. Straight through four corners.
- 29.6 Curve right.
- 34.6 Straight through four corners. (To right leads to Lakehurst.)
- 34.9 Curve right, then left.
- 35.5 Slightly winding to mileage 36.3.
- 36.3 *Curve right.
- 37.5 *Lake Monetta on right. Cross bridge and turn left. Lake Carasaljo on left.
- 37.8 Turn right at irregular four corners on Main St.
- 37.9 Lakewood. Main St. and Clifton Ocean Avenue Inn
Ave. P. O. on right. (Straight ahead for Asbury Park and shore points.)

ROUTE 1150

TRENTON, N. J., TO LONG BRANCH.—45.1 Miles.

Via Freehold.

Reverse Route 1156

Gravel and macadam.

- 0.0 TRENTON. Broad and State St. Go east on State St.
- 0.2 City Hall on right. Cross canal bridge, then railroads.
- 0.7 Cross viaduct over railroads.
- 2.0 Double trolley ends; follow single trolley one long block.
- 2.1 Four corners; turn right on Clinton Ave.
- 2.6 Fair grounds on left.
- 4.3 Mercerville. Cross trolley and straight ahead.
- 5.6 Cross trolley.
- 8.5 Edinburg. After crossing bridge; turn right at irregular four corners.
- 8.7 *Curve left.
- 10.7 Windsor. *Cross railroad (in cut) and turn left.
- 13.2 Cross railroad.
- 14.2 Pass fountain water trough, and bear left on Main St.
- 14.5 Hightstown. Monmouth and Main Sts.; turn right on Monmouth St.
- 19.9 Curve left, and then turn left across bridge.
- 20.1 Bergen's Mills. Straight ahead.
- 21.3 Manalapan. Straight ahead.
- 24.2 Black Mills. Straight ahead.
- 27.6 End of Manalapan St.; turn left on Main St.
- 27.9 *Cross railroad.
- 28.0 Freehold. Main and South Sts. Court House on left. Straight ahead.
- 28.2 Fork; straight ahead on East Main St.
- 28.5 *Cross railroad.

- 33.4 Colts Neck. Straight ahead.
- 35.4 Scobeyville. Straight ahead.
- 37.5 End of road; turn right.
- 37.9 Tinton Falls. Cross bridge, then keep to right.
- 38.4 End of road; turn left.
- 40.2 End of road; turn right.
- 40.3 Eatontown. Cross railroad, then soon turn left with trolley.
- 41.9 Cross trolley, curving left, then soon curve right.
- 44.3 City Hall on right.
- 44.8 Five corners; cross trolley and bear slightly right on So. Broadway.
- 44.9 Cross railroad.
- 45.1 Long Branch. So. Broadway and Ocean Ave.

ROUTE 1151

TRENTON, N. J. TO NEW BRUNSWICK—32.1 Miles.

Via Mercerville and Hightstown.

Reverse Route 1130

State Road. (No. 1). Macadam and concrete.

- 0.0 TRENTON. Broad and State Sts. Go east on State St., passing church on left.
- 0.1 P. O. on left.
- 0.2 City Hall on right. Cross bridge over canal and railroads.
- 0.7 Right-hand road, beyond viaduct; turn right on Monmouth St., leaving trolley.
- 0.9 Four corners; turn left on Greenwood Ave.
- 2.6 End of road; turn right across trolley.
- 2.8 State fair grounds on left.
- 3.7 Straight ahead, at garage on corner.
- 4.3 Mercerville. Four corners, with stores; turn right.
- 4.6 *Cross railroad.
- 5.7 Hamilton Square. At Soldiers' Monument; straight ahead.
- 7.9 Robbinsville. P. O. on left; cross railroad.
- 8.0 Four corners; turn left. (Turn right for Allentown, Wrightstown and Camden.)
- 10.8 Windsor. Station on left; straight ahead.
- 13.3 *Cross railroad.
- 14.2 Hightstown. P. O. on right. Straight through bearing left on Main St.
- 14.4 Under viaduct.
- 14.6 Main and Monmouth Sts. Straight ahead on Main St. (Turn right on Monmouth St. for Asbury Park.)
- 16.7 End of road; bear right.

- 17.0 Cranbury. Straight ahead.
 21.5 ★Cross railroad.
 22.0 Dayton. P. O. on right; straight ahead.
 22.5 Cross railroad.
 29.9 Milltown. Straight ahead.
 30.6 ★Cross railroad, coming on Georges Road.
 30.9 Turn right on Commercial Ave.
 31.4 Turn left on George St. (Double trolley.)
 32.1 New Brunswick. George and Albany Sts. P. O. on left.

ROUTE 1152

TRENTON, N. J. TO EASTON, PA.—55.1 Miles.

Via Flemington and Milford.

Reverse Route 1225

Five miles gravel beyond Milford, balance macadam.

- 0.0 TRENTON. State and Warren Sts. Go north on Warren St.
 0.4 At far side of monument; turn left with trolley on Pennington Ave.
 8.0 Pennington. Straight ahead.
 10.1 Trolley leaves to right.
 16.6 Ringoes. Fork; bear right.
 17.7 Four corners, at cemetery; turn left.
 22.4 Flemington.. At post office; turn left on Mine St.
 23.2 Fork; bear right and at next four corners; turn right.
 34.8 Frenchtown. At end of road, beyond bridge; turn left and next right.
 38.3 Milford. At stone church; turn left, pass station and cross bridge over Delaware River. (Toll 15-25 cents).
 38.7 End of road; turn right along river.
 43.2 Turn right after left curve and go through covered bridge.
 44.4 Monroe, Pa. Straight ahead.
 45.6 Fork; bear left, leaving trolley.
 48.1 Riegelsville. Straight ahead.
 47.8 Cross bridge and bear right.

- 49.1 Raubsville. Right-hand road, beyond bridge; turn right.
 54.6 End of road; turn right on Third St. and cross bridge over Lehigh River.
 55.1 Easton. At Square and Monument.

ROUTE 1156

LONG BRANCH, N. J., TO TRENTON—45.1 Miles.

Via Freehold.

Reverse Route 1150

Gravel and macadam.

- 0.0 LONG BRANCH. South Broadway and Ocean Ave. Go south on Broadway.
 0.2 Cross railroad.
 0.3 Cross trolley and bear slightly left on Broadway.
 0.8 City Hall on left.
 3.2 Cross trolley, curving right, then soon curve left.
 4.8 Eatontown. Turn right with trolley and soon cross railroad.
 4.9 Turn left.
 6.7 Turn right.
 7.2 Tinton Falls. Keep to left and cross bridge.
 7.6 Turn left.
 9.7 Scobeyville. Straight ahead.
 11.7 Colts Neck. Straight ahead.
 13.6 Cross railroad.
 16.9 Straight ahead on Main St.
 17.1 Freehold. Straight ahead. Courthouse on right.
 17.2 Cross railroad.
 17.5 Turn right on Manalapan St.
 20.9 Black Mills. Straight ahead.
 23.8 Manalapan. Straight ahead.
 25.1 Bergens Mills. Cross bridge and turn right, then curve left.
 30.6 Hightstown. Turn left on Main St.
 30.7 Under viaduct.
 31.9 Pass water fountain and bear right.
 32.9 Cross railroad.
 34.4 Windsor. Turn right and cross railroad.
 36.4 ★ Curve right.

SOCONY

REG. U.S. PAT. OFF.

GASOLINE

Uniform Quality Best Results

- 80.1 **Westville.** Bear right on Broadway. (Bear left on Jersey Ave. for Gloucester-Philadelphia Ferry.)
- 82.0 **Gloucester.** Straight through on Broadway.
- 85.2 **Camden.** Broadway and Federal St. Turn left on Federal St.
- 85.8 Take Ferry to Philadelphia.
- 85.8 Leaving ferry; turn right and left on Market St.
- 87.0 **Philadelphia, Pa.** City Hall. Broad and Market Sts.
Hotel Lorraine
Hotel Majestic

ROUTE 1194

CAPE MAY, N. J. TO EGG HARBOR CITY—51.7 Miles.

Via Cape May C. H. and Mays Landing.

Reverse Route 1190

Gravel, macadam and concrete.

- 0.0 **CAPE MAY.** Broadway and Beach Ave. Go east on Beach Ave.

- 0.3 Turn sharp left on Jackson Ave.
- 0.4 Turn right on Washington St.
- 1.9 End of street; turn left and next right across bridge over Cape Island Creek.
- 3.1 Curve left.
- 3.8 Curve right.
- 4.9 **Bennett.** Straight ahead.
- 13.4 **Cape May C. H.** Straight ahead.
- 21.9 **Ocean View.** Straight ahead.
- 24.6 **Seaville.** Turn left. Several dangerous railroad crossings.
- 31.8 **Tuckahoe.** Five corners; bear right. Cross bridge over Great Egg Harbor.
- 44.5 End of road; turn right on Main St.
- 44.6 **Mays Landing.** Main and Cape Ave. Turn left on Cape Ave.
- 51.6 Turn left across railroad on Liverpool Ave.
- 51.7 **Egg Harbor City.** Liverpool Ave. and White Horse Pike. Turn left for **Philadelphia.** Turn right for **Atlantic City.**

PENNSYLVANIA SECTION

ROUTE 1201

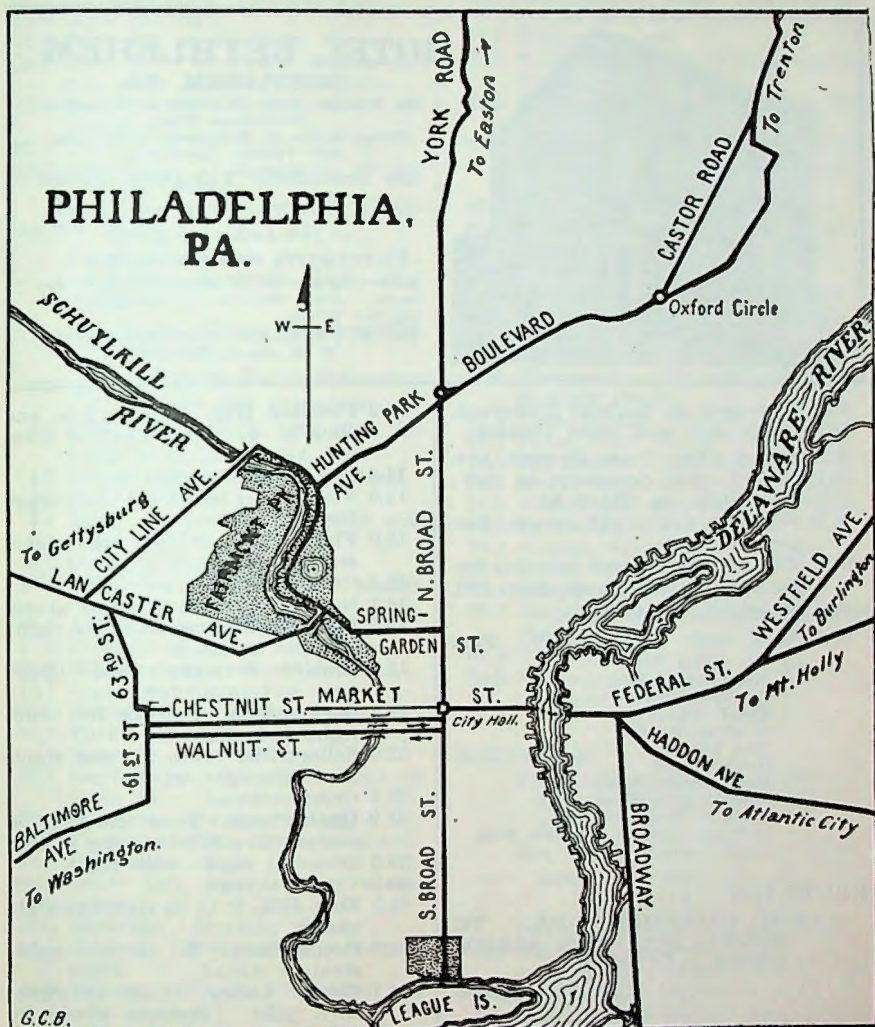
PHILADELPHIA, PA. TO NEW YORK CITY—92.1 Miles.

Via Lincoln Highway.

Reverse Route 36

All bitulithic, macadam or concrete.

- 0.0 **PHILADELPHIA.** City Hall. Go north on Broad St.
- 4.6 Circular grass plot, curve right on Boulevard, which follow.
- 8.7 **Oxford Circle.** Bear left on Castor Road.
- 9.6 Bear slightly left on Lincoln Highway.
- 11.2 **Bustleton.** End of road; curve left and next right, after passing hotels on right.
- 12.1 Hedge on right; bear right.
- 19.9 **Langhorne.** Four corners; straight ahead.
- 22.7 **Oxford Valley.** Four corners; straight ahead.
- 25.1 Diagonal four corners; yellow house on right; turn left, bearing right after crossing railroad bridge 25.4 and avoid right at next fork.
- 28.3 Meet trolley and cross toll bridge over Delaware River.
- 28.8 Four corners, beyond bridge; turn right on State St.
- 29.4 **Trenton, N. J.** State and Broad Sts. Turn left on Broad St.
- 29.8 At Soldiers' Monument, turn right on Brunswick Ave.
- 35.6 **Lawrenceville.** Straight ahead.
- 40.8 **Princeton.** College buildings on right; straight ahead.
- 43.6 **Kingston.** Turn right around mill, cross three bridges and pass station on right.
- 50.3 **Franklin Park.** P. O. on right; straight ahead.
- 56.8 **New Brunswick.** George St. and Albany Ave. Straight ahead, crossing bridge over Raritan River.
- 61.4 Straight ahead. (Old route turns left.)
- 61.6 Go under railroad.
- 62.0 End of road; bear left and cross bridge over railroad.
- 62.1 Go under railroad.
- 62.3 End of road; turn right.
- 62.5 **Metuchen.** Church on right; straight ahead.
- 65.6 **Iselin.** Station on right; straight ahead.
- 66.8 **Colonia.** Station on right; straight ahead.
- 67.7 End of road; turn left. (Road from Perth Amboy comes in here.)



- 708.4 Rahway. Continue straight ahead, crossing trolley, and immediately pass cemetery.
- 71.9 Cross railroad.
- 72.1 Linden on right, Roselle on left
- 74.0 Viaduct just ahead; turn left from Rahway Ave. on Cherry St.
- 74.5 Cross viaduct, turning right on Westfield Ave.
- 74.8 Elizabeth. End of street. P. O. on left; turn left on Broad St.
- 74.9 Soldiers' monument in fork; keep to right with trolley.
- 75.2 Bear right on Newark Ave., which becomes Frelinghuysen Ave.

- 79.2 Five corners, at fire house; turn half left on Astor St.
- 79.3 End of street; turn right on Clinton Ave.
- 79.7 Bear left at end of park on Broad St.
- 80.3 Newark. Broad and Market Sts. Turn right on Market St.
Hotel Riviera
- 81.9 Bear left with trolley on Fleming Ave.
- 82.0 Cross railroad.
- 85.1 Turn square left into West Side Park, then curve right.
- 85.4 At fountain go quarter way round.

- 23.6 Four corners; straight ahead.
 24.9 ★Cross railroad, coming on Sixth St.
 25.1 **Denton.** Sixth and Market Sts. Straight ahead on Sixth St. (Turn right for business section of Denton and for Ridgeley and Hillsboro).
 25.3 End of road; bear left.
 30.1 Turn sharp right.
 31.0 Four corners; turn left at church. (Straight ahead for Preston and Cambridge).
 35.2 **American Corners.** Four corners; turn left.
 38.8 End of road; bear left.
 39.8 End of road; bear right.
 40.8 Four corners; turn left.
 41.1 **Federalburg.** At post office and bank; straight ahead on Main St. (See 'Note A for route to Seaford, Del.)
 41.2 Right hand road; turn right.
 42.7 ★Sharp curves also at 43.5.
 45.6 **Williamsburg.** Right hand road; turn right and pass station on left.

- 47.7 Bear slightly right.
 47.8 ★Cross railroad. Station on left.
 48.0 **Hurlock, Md.** Five corners, bank on right.

NOTE A

FEDERALSBURG TO SEAFORD, DEL.—12.4 Miles.

- 0.0 **FEDERALSBURG, MD.** At post office and bank. Go east immediately, crossing concrete bridge.
 0.3 Diagonal road; bear right.
 1.7 Fork; bear left.
 2.4 Fork; bear right.
 5.4 **Atlanta, Del.** Four corners at store; turn right.
 6.4 Left hand road; turn left.
 8.3 End of road, Wesley School on left; turn right.
 9.3 Left hand road; turn left.
 10.7 Cross railroad and bear left.
 11.1 **Ross.** Straight through.
 12.3 Four corners; turn left on Main St.
 12.4 **Seaford.** At hotel. (Straight ahead for Dover.)

CANADIAN SECTION

ROUTE 1501

DETROIT, MICH. TO LONDON, ONT.—124.0 Miles.

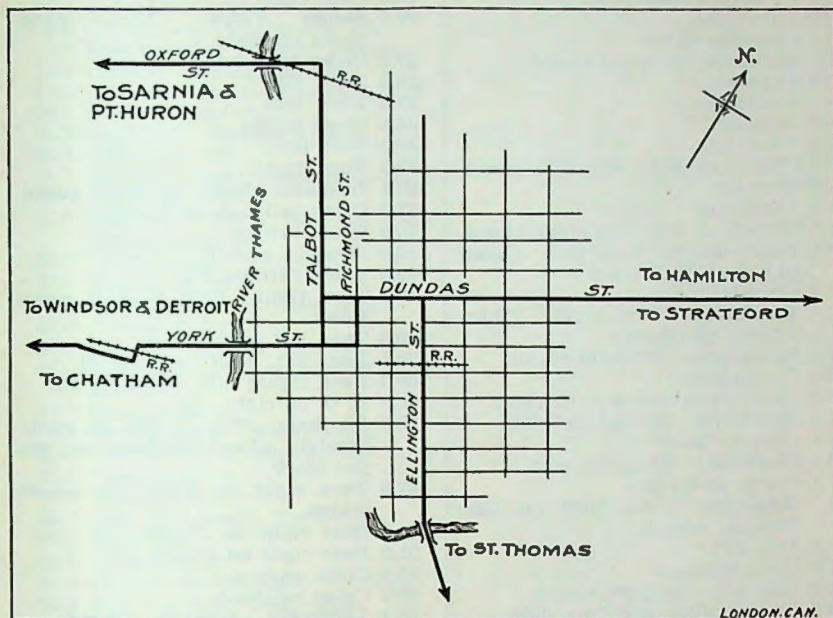
Via Port Huron and Sarnia.

Reverse Route 1513

All concrete and gravel.

- 0.0 **DETROIT.** Woodward and Gratiot Aves. Go northeast on Gratiot Ave. and continue on same out of city.
 1.2 Cross railroad.
 2.7 Cross railroad.
 7.3 **Seven Mile.** Straight ahead.
 10.2 **Half Way.** Straight ahead.
 11.9 **Rosevale.** Straight ahead.
 19.2 Cross trolley and bridge.
 20.2 **Mt. Clemens.** Straight ahead with trolley.
 Medea Hotel and Mineral Baths
 21.3 Cross railroad.
 24.9 Cross trolley. School on left.
 28.0 Straight ahead. Trolley leaves to right.
 35.6 **Muttonville.** Turn right.
 40.8 **Adair.** Straight ahead.
 46.3 Cross railroad.
 48.8 Turn left at trolley.
 49.2 **St. Clair.** Straight ahead.
 49.8 Cross trolley.
 55.9 Turn left and cross trolley, then right.
 56.8 Cross railroad and trolley.
 59.7 Cross viaduct over railroad on Military St.
 60.9 **Port Huron.** Broad and Military Sts. Turn right and take ferry to Sarnia.
 61.1 **Sarnia.** Leave ferry and jog left, then right on Cromwell St.
 61.2 Turn left on Christiana St.
 61.5 Town Hall on right.
 61.8 Turn right on London Rd.
 64.1 Cross railroad.
 65.1 Bear right across bridge.
 72.5 School on left.
 80.3 School on left.
 85.9 Straight ahead. School on right.
 86.2 **Warwick.** Straight ahead across bridge.
 91.7 Straight ahead. School on left.
 97.9 **Wisbeach.** Straight ahead.
 104.5 Church on left.
 108.1 **Poplar Hill.** P. O. on left. Straight ahead and cross bridge.
 112.7 **Lobo.** Straight ahead.
 115.7 Cross bridge.
 116.1 Turn right.
 118.0 **Hyde Park.** Straight ahead.
 118.4 Cross viaduct.
 118.8 Cross bridge.
 119.6 Turn left on Oxford St.
 120.9 Cross viaduct.
 123.0 Cross bridge.

LONDON, ONT.



- 123.1 Turn right on Talbot St. under viaduct.
 123.9 Turn left on Dundas St. one block.
 124.0 London. Dundas and Richmond Sts.

ROUTE 1502

DETROIT, MICH., AND WINDSOR, ONT., TO LONDON, ONT.—144.5 Miles.

Via Leamington, Blenheim, Strathburn, Delaware and Lambeth.

Reverse Route 1512

Good gravel road.

- 0.0 **DETROIT.** Cadillac Square. Monument on left. Go south on Woodward Ave. four blocks to ferry. Cross on same to Windsor, Ont.
 0.4 **Windsor.** Sandwich St. and Ouelette Ave. Straight ahead with trolley on Ouelette Ave.
 2.2 Turn left on Tecumseh Rd., leaving trolley.
 2.5 Turn right, crossing and meeting trolley to right.
 4.2 Cross railroad.
 4.5 Cross trolley and railroad, leaving trolley.
 7.2 Turn left.
 9.3 Cross railroad.

- 12.9 Cross railroad.
 13.0 Cross trolley, which comes from right.
 17.3 Cross railroad.
 17.5 Essex. Straight ahead.
 17.8 Cross trolley and follow same.
 19.5 Cemetery on right.
 22.4 Two churches on right. Cross trolley and follow.
 22.6 Cross trolley and follow.
 23.4 Cross trolley, leaving same.
 24.9 School on left. Straight ahead.
 28.2 Turn right.
 28.8 Turn right.
 30.3 Turn left.
 31.9 Cemetery on left and right.
 33.9 Cross railroad.
 34.1 P. O. on right. Straight ahead.
 34.3 **Leamington.** Straight ahead.
 38.0 Church on left.
 42.0 **Wheatley.** Straight ahead.
 46.5 Bear left.
 52.9 Church on left.
 59.2 Cross bridge.
 63.5 Cemetery and church on right.
 68.0 **Cedar Springs.** Straight ahead.
 72.0 Straight ahead, across railroad.
 72.8 **Blenheim.** Town Hall on left. Straight ahead.
 74.2 Cemetery on left. Straight ahead.
 82.2 Turn left.
 84.8 **Ridgetown.** Garage on right. P. O. on left. Turn right.

SOUTHERN SECTION

(WASHINGTON TO RICHMOND, SEE ROUTE 1230.)

ROUTE 1600

RICHMOND, VA., TO RALEIGH, N. C.—177.0 Miles.

Via South Hill.

Reverse Route 1606

Concrete to Petersburg, graded sand-clay to Norlina, concrete to Henderson, graded sand-clay to Wake Forest, balance concrete. Pole markings, No. 50 in North Carolina.

- 0.0 **RICHMOND.** Broad and Ninth Sts. Go easterly on Broad St.
- 0.3 Turn right on 14th St.
- 0.4 Jog right and left, still on 14th St., shortly meeting and following trolley.
- 0.7 Under railroad and cross bridge over James River.

- 1.1 At end of bridge; curve slightly right on Hull St. and cross railroad.
- 2.1 **Manchester.** Bear left with branch trolley on Petersburg Pike.
- 9.7 Cross railroad.
- 16.4 Under railroad.
- 20.1 Under railroad.
- 22.2 Cross bridge and railroad, coming on 2nd St.
- 22.5 Trolley comes from right.
- 22.6 Turn right with trolley on Bolingbrook St.
- 22.7 **Petersburg.** End of Bolingbrook St. Turn left on Sycamore St.
Hotel Petersburg
- 23.0 Railroad ahead; turn right on Washington St.
- 24.5 Under railroad.
- 25.3 Cross railroad.

HOTEL PETERSBURG PETERSBURG VIRGINIA

G. C. MORGAN, Manager

*Absolutely Fireproof***Headquarters for Commercial and Tourist Travel**

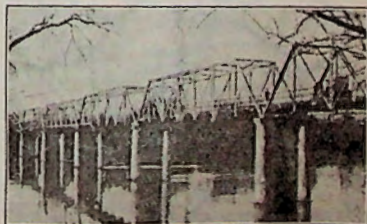
EXCELLENT DINING ROOM

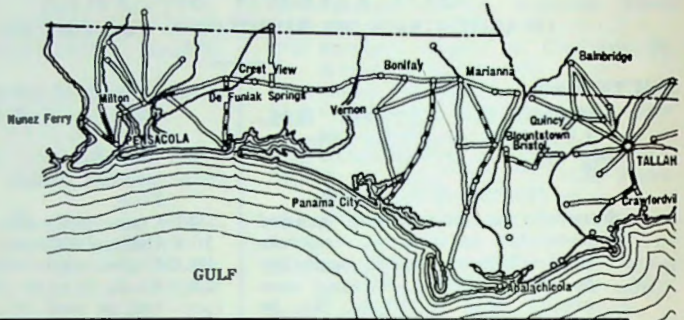
PLATE LUNCHEON AND DINNER

Also A la Carte Service

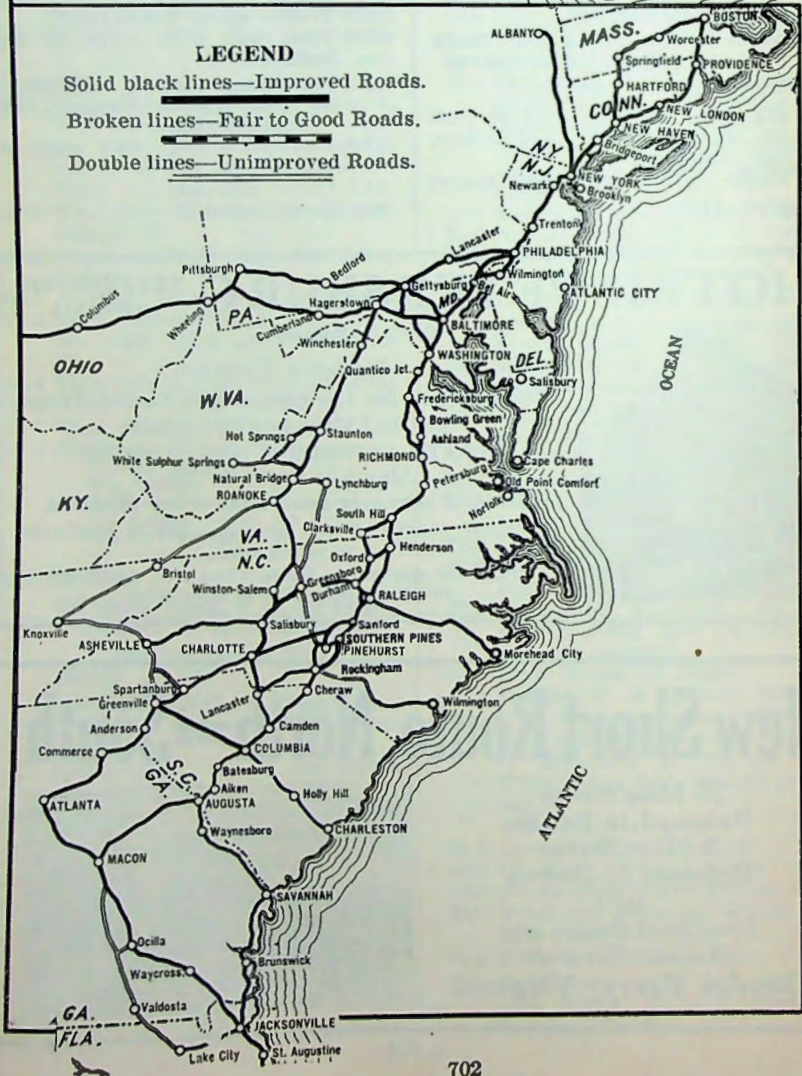
An ideal stop-over point from either direction.

The golf course of the Country Club is available to our guests.

Visit the Old Battle Fields, Camp Lee, Hopewell and Many Other Points of Interest.**New Short Route, North and South**20 Miles Shorter
Richmond to Raleigh8 Miles Shorter
Richmond to Durham
viaNew Steel Bridge over
Roanoke River at**Goodes Ferry, Virginia**



LEGEND
 Solid black lines—Improved Roads.
 Broken lines—Fair to Good Roads.
 Double lines—Unimproved Roads.



SOUTHERN SECTION



FLORIDA

AUTOMOBILE LAWS

EAST 92nd ST. TO FULTON ST., ASTORIA
About every 15 minutes.

BROOKLYN.

69th ST. TO ST. GEORGE, S. I.

Leave 69th St. on the hour, and every 20 minutes. 6.00 a. m. to 9.30 p. m. Leave St. George on the half hour, and every 20 minutes. 6.30 a. m. to 9.30 p. m. on weekdays. Sundays until 10.30 p. m.

LINOLEUMVILLE, S. I. TO CATERET, N. J.

About every half-hour from 8.30 a. m. to 6.35 p. m. on weekdays. 8.30 a. m. to 9.30 p. m. on Sundays. Rates: Car and driver, 40 cents.

ACROSS LONG ISLAND SOUND

NEW LONDON, CONN.—GREENPORT—SAG HARBOR, N. Y.

May 14 to about June 15 leave Sag Harbor 7.30 a. m., Greenport 8.40 a. m., arriving New London 11 a. m.

Leave New London 1 p. m., arrive Greenport 3.20 p. m., arrive Sag Harbor 4.30 p. m.

Beginning June 15 to about October 15, when line is closed for the winter, leave Sag Harbor 6 a. m., Greenport 7 a. m., arrive New London 9 a. m.

Leave Sag Harbor 12.45 p. m., Greenport 1.45 p. m., arrive New London 3.45 p. m.

Leave New London 10 a. m., arrive Sag Harbor 12.30 p. m. Leave New London 4 p. m., arrive Greenport 6.15, arrive Sag Harbor 7.15.

This ferry can carry 60 pleasure automobiles of any size.

GREENWICH, CONN.—OYSTER BAY, N. Y.

Leaves: Greenwich 9 and 11.30 a. m., 2, 4.30 and 7 p. m. Leaves Oyster Bay 10 and 12.30 a. m., 3, 5.30 and 8 p. m. (Daylight saving time.) (Before May 27 and after Oct. 1, 7-8 trip will only be made on Sundays.) Rates: Autos 25 Cents per foot overall length on deck; adults, 20 cents, children 10 cents. Holidays: 25 and 15 cents.

GLASON POINT TO COLLEGE PT., L. I.

Every 40 minutes from 7.00 a. m. to 11 p. m.

BRIDGEPORT, CONN.—PORT JEFFERSON, N. Y.

Steamer Park City

From about Jan. 17th. Leave Port Jefferson Tuesdays and Fridays at 9.15 a. m. Leave Bridgeport same days at 3.00 p. m.

From about May 8th. Leave Port Jefferson on Mondays, Wednesdays and Fridays at 9.15 a. m. Leave Bridgeport same days at 3.00 p. m.

From about June 1st. Leave Port Jefferson daily (Sundays excepted) 9.15 a. m.

Leave Bridgeport, 3.00 p. m.

From about July 1st. Leave Port Jefferson daily 9.15 a. m. and 4.30 p. m.

Leave Bridgeport 1.30 p. m. and 6.30 p. m.

From about Sept. 8. Leave Port Jefferson daily (Sundays excepted) 9.15 a. m.

Leave Bridgeport 3.00 p. m.

From about Nov. 3. Leave Port Jefferson, Monday, Wednesdays and Friday, 9.15.

Leave Bridgeport, same days, 3.00 p. m.

Rates \$3.00 up. Passengers 75 cents.

ABSTRACT OF AUTOMOBILE LAWS

CONNECTICUT

Registration—Comm. of Motor Vehicles, Hartford. Expires Dec. 31.

Fees—Passenger cars 8 cents per cubic inch, or fraction, of piston displacement. Pro rata reduction after March 31.

Operator—Persons over 18, fee \$3.00. Examination required for new applicants. Expires last day of Feb.

Speed—Reasonable and proper. Not to exceed 20 miles per hour in thickly settled sections; 30 miles per hour on road; 10 miles per hour passing standing trolleys; commercial vehicles not equipped with pneumatic tires, 15 miles per hour on highways, 8 miles an hour on bridges.

Mirrors—Required on commercial vehicles where view to rear is obstructed.

Right of Way—Persons coming from right.

Non-Residents—Exempt for 15 days.

Non-glare law in effect.

DELAWARE

Registration—Secretary of State, Dover, Del. Expires Dec. 31.

Fees—\$2.00 per 500 lbs. or fraction, including passengers, estimating passengers at 125 bs. each. Half fee after Sept. 1.

Operator—Persons over 18, fee \$3.00. Expires Dec. 31.

Chauffeurs—Persons over 18, fee \$3.00. Examination required. Expires Dec. 31.

Chains—Prohibited except on hard roads, unless necessary.

Speed—Reasonable and proper. Prima facie

evidence of excessive speed if over 35 miles per hour in country, or 25 miles where built up.

Right of Way—Persons coming from right, but State Highway Dept. may designate certain highways over which persons travelling have right of way over those travelling on intersecting highways.

Non-residents—Reciprocal. Foreign residents require special license.

Non-glare law in effect.

DISTRICT OF COLUMBIA

Registration—Collector of Taxes, Washington. Expires Dec. 31.

Fees—Under 24 H.P. \$3.00; 24 to 30 H.P. \$5.00; over 30 H.P. \$10.00.

Operator—License from Traffic Bureau. Persons over 16, fees \$2.00. Examination required. Expires Dec. 31.

Right of way—Persons coming from right.
Speed—22 miles per hour in open country; 18 miles per hour between intersecting streets; 12 miles per hour across intersections.

Right of Way—Persons coming from the right.

Non-Residents—Reciprocal, but must register at Traffic Bureau within 3 days.
Non-glare law in effect.

FLORIDA

Registration—State Comptroller, Tallahassee, Fla. Expires Dec. 31.

Fees—Based upon weight of vehicle, kind

AUTOMOBILE LAWS

of tires and capacity. Pleasure cars 60 cents per 100 lbs.

Chauffeurs—Age limit 18 years; examination required; fee \$2.00. Expires Dec. 31.
Speed—Reasonable and proper. Prima facie evidence of excessive speed if over 15 miles per hour where view is obstructed or if over 5 miles per hour when passing street cars.

Maximum allowable speed of vehicles under 4,000 lbs. gross weight, 25 miles per hour; over 4,000 lbs., 20 miles per hour.

Non-Residents—30 day exemption. A two months' registration or multiple of two months may be taken out for 1-6 of annual fee for each two months.

Non-glare law in effect.

GEORGIA

Registration—Secretary of State.

Fees—Not over 23 H.P., \$11.25; exceeding 23 H.P., 60c per horse power.

Chauffeurs—Persons over 16. Fee, \$2.00. Expire last day of February.

Speed—Reasonable and safe, not to exceed 30 miles per hour. Intersecting highways or other dangerous places, 10 miles per hour.

Non-residents—Exempt 30 days.

MAINE

Registration—Secretary of State, Augusta. Expires Dec. 31.

Fees—Passenger cars based on weight of vehicle, and horse power, 25c. per 100 lbs. plus 25c. per horse power.

Operator—Persons over 16; fees \$2.00. Expires Dec. 31.

Chauffeurs—Age limit 18 years; examination required; fee \$5.00.

Speed—8 miles per hour where view is obstructed; 15 miles per hour in built up sections; 25 miles per hour in open country, prima facie evidence of excessive speed; absolute limit 35 miles per hour.

Non-Residents—Passenger cars 30 days; commercial vehicles must be registered at once.

Non-glare law in effect

Right of Way—Persons coming from right.

MARYLAND

Registration—Comm. of Motor Vehicles, Baltimore, Md. Expires Dec. 31.

Fees—Dependent on gas tax income, probably about \$1.00.

Operator—\$2.00. Persons 18. Instruction license \$1.00. Perpetual.

Chauffeurs—Fee \$3.00; good for one year.

Right of way—Persons coming from right.

Speed—Reasonable and proper. Not to exceed 15 miles per hour in thickly settled districts, 20 miles per hour in outlying districts. Prima facie excessive if over 25 miles per hour in open country. In no case to exceed 35 miles per hour; 12 miles per hour when turning from one street to another.

Non-Residents—Reciprocal.

Non-glare law in effect.

MASSACHUSETTS

Registration—Registrar of Motor Vehicles, Boston. Expires Dec. 31. But plates for preceding year may be used until noon Jan. 1, or plates for following year may be used from noon, Dec. 31.

Fees—Passenger cars under 30 H.P. \$10; 30-40 H.P. \$15.00; 40-50 H.P. \$20.00; over 50 H.P. \$25. Half fee after Oct. 1.

Operator—Persons over 16; fee \$4.00; renewal \$2.00. Examination required.

Mirror—Required on trucks and taxicabs where view to rear is obstructed.

Right of way—Persons coming from right.

Speed—Reasonable and proper. Prima facie evidence of excessive speed if over 20 miles per hour in open country, 15 miles per hour where thickly settled, 8 miles per hour where view is obstructed

Non-Residents—Reciprocal. Suits against non-residents who operate on Mass. highway may be started by serving process upon the registrar.

Non-glare law in effect.

Approved Tail Lights required.

NEW HAMPSHIRE

Registration—Comm. of Motor Vehicles, Concord. Expires Dec. 31.

Fees—Gross weight not over 4,000 lbs., 45c. per 100 lbs.; over 4,000 and not over 6,000 lbs., 55c. per 100 lbs.; over 6,000 and not over 8,000 lbs., 60c. per 100 lbs. Over 8,000 lbs., 70c. per 100 lbs. For vehicles equipped with hard rubber tires add 20c. per 100 lbs. Gross weight includes vehicle and load, allow 150 lbs. for each passenger the car will carry. Minimum fee, \$10.

Operator—Persons 16; examination required; fee \$3.00; renewal \$2.00; expires Dec. 31.

Chauffeurs—Persons over 18; examination required; fee \$5.00, renewal \$2.00; expires Dec. 31.

Right of Way—Persons coming from right.

Speed—Reasonable and proper. Not to exceed 10 miles per hour where view is obstructed, 15 miles per hour where thickly settled, 25 miles per hour in open country.

Non-Residents—20 days. Special license for July, August and September at one-half the annual rates. Non-resident operator license, \$2.00 for first, and \$1.00 for renewals

Non-glare law in effect.

NEW YORK

Registration—State Tax Commission, Motor Vehicle Bureau, Albany; Automobile Bureaus in New York City and Buffalo; also County Clerk in any county. Expires Dec. 31.

Fees—Cars weighing 3500 lbs. or less, 50 cents per 100 lbs. or major fraction thereof. Cars over 3500 lbs., 75 cents per 100 lbs. or major fraction thereof. Minimum fee for 6, 8 or 12 cylinder car \$10.00 Other cars \$8.00.

Operators—Age limit 18 years; fee \$2.00; examination required; expires July 1; renewal, \$1.00. Persons driving in New York City ten days must have license.

Chauffeurs—Age 18; fee \$5.00; renewal \$2.00. Expires July 1.

Right of Way—Persons coming from right.

Speed—Reasonable and proper. Over 15 miles per hour in villages; 30 miles per hour in open country, prima facie evidence of excessive speed.

Non-Residents—Reciprocal.

Non-glare law in effect.

NEW JERSEY

Registration—Comm. of Motor Vehicles, Trenton, and at offices in principal cities. Expires Dec. 31.

Fees—For passenger vehicles, 40 cents per H.P. or the major fraction thereof up to 29 H.P.; 50 cents per H.P. or the major fraction thereof for vehicles of 30 H.P. or over.

Drivers—Age 17, \$3.00. All persons must pass examination; expires Dec. 31. Learners must obtain special license.

AUTOMOBILE LAWS

Mirror—Required where view to rear is obstructed.

Right of Way—Persons coming from right.

Speed—Reasonable; open country, 8 miles per hour on sharp curves, 15 miles per hour at intersecting roads. For built-up sections 12 miles per hour. Maximum in open country, 30 miles per hour.

Non-Residents—15 days.

Non-glare law in effect.

Chains—Can be used only when necessary owing to slippery condition of roads or streets.

NORTH CAROLINA

Registration—Secretary of State, Raleigh. Expires June 30.

Fees—24 H.P. or less \$12.50; 24-30 H.P. \$20.00; 30-35 H.P., \$30.00; over 35 H.P. \$40.00. Half fee after Jan. 1.

Operator—Must be over 16. No license required.

Speed—Reasonable and proper, not to exceed 20 miles per hour in residential portion of city; 10 miles per hour in business section; 30 miles per hour in open country.

Non-Residents—Reciprocal, but not to exceed 60 days.

Non-glare law in effect.

PENNSYLVANIA

Registration—State Highway Department, Harrisburg, Pa. Expires Dec. 31.

Fees—40 cents per H.P. or fraction thereof, minimum \$10.00. After July 31 one-half fee.

Chauffeurs—Age 18 years; fee \$2.00; expires Dec. 31.

Operators—Age 16 years. Fee \$1.00. Owner's certificate issued with registration—no extra fee.

Right of Way—Persons coming from right.

Speed—Reasonable and proper. Maximum speed 30 miles per hour. Local authorities may reduce to 15 miles per hour.

Non-glare law in effect.

RHODE ISLAND

Registration—State Board Public Roads, Providence. Expires Dec. 31.

Fees—Passenger cars, 25 cents per H.P. or fraction thereof and 25 cents per 100 lbs. of gross weight of vehicle, and load or fraction thereof. After April 1, July 1, and Oct. 1, three-fourths, one-half and one-quarter of the above respectively.

Operator—\$2.00. Persons over 16 years. Examination required.

Right of Way—Persons coming from right.

Speed—Reasonable and proper. Not to exceed 15 miles per hour in built up section; 25 miles per hour in open country.

Non-Residents—Reciprocal.

VERMONT

Registration—Secretary of State, Montpelier. Expires Dec. 31.

Fees—Passenger cars, 85c. per hundred pounds, fractions of 100 lbs. not considered. Minimum fee \$14.00. One-half rate after Aug. 1.

Chauffeurs—Persons over 18; fee \$2.00; examination required. Expires Dec. 31.

Operators—Persons over 16, fee \$2.00. Examination required. Expires Dec. 31.

Speed—Excess of 25 miles per hour in open country prima facie evidence of negligence. Same for 10 miles per hour in built up sections. Local regulations permitted.

Right of Way—Persons leaving for right.
Non-Residents—Reciprocal. Special four months registration for one-half regular fee.

Non-glare law in effect.

NEW BRUNSWICK

Registration—Dept. of Public Works, Fredericton. Expires Dec. 31.

Fees—Passenger cars \$1.00 for each 100 lbs. of weight or fraction thereof, minimum fee \$13. In addition there is a \$5.00 filing fee.

Chauffeur—\$2.00. Examination. License \$2.00.

Operator—Must be owner, or member of owner's family, licensed chauffeur, or accompanied by one. Must be over 18.

Speed—Reasonable and proper. Prima facie evidence of reckless driving if greater than 15 miles per hour in built up sections; 12 miles per hour in towns; 20 miles per hour where road cannot be seen 200 yards ahead.

Rule of Road—Keep to right.

Non-residents—Exempt for 30 days.

DOMINION OF CANADA

Custom Regulations

Permits for a stay not exceeding 30 days (for pleasure purposes only) may be secured from the Collector at Port of Entry.

No fee required to be paid, but the car must be imported by the owner personally. Tourist must report at American and Canadian Customs both on entering and leaving Canada.

For a stay over 30 days and not to exceed 6 months a bond is required for twice the estimated duty. For such a stay it is advisable to secure such bond from customs brokers.

NOVA SCOTIA

Registration—Provincial Secretary, Halifax. Expires Dec. 31.

Fees—List price \$800 or less, \$20.00; other cars under 20 H.P. \$25.00; 20-25 H.P., \$30.00; 25-30 H.P. \$35.00; 30-40 H.P. \$50.00; 40 H.P. and over \$60.00. Half fee after Sept 1.

Rule of Road—Keep to right.

Right of Way—Persons coming from right, except in Halifax, where persons traveling east to west have right of way.

Speed—Reasonable and proper. Not to exceed 15 miles per hour in towns or where view is obstructed. Prima facie evidence of excessive speed if over 25 miles per hour in open country.

Non-Residents—Exempt for 3 months.

Chauffeur—Persons over 18. Examination, \$1.00. License, \$5.00. Expire Dec. 31.

Note—Between March 20 and May 1 motor vehicles prohibited without permission of Supt of Highways.

QUEBEC

Registration—Provincial Treasurer, Quebec. Expires Mar. 1.

Fee—Passenger cars, 50 cents per H.P. Half fee after Sept. 1.

Right of Way—Persons coming from right.
Chauffeurs and Operators—Persons over 18. Expire Mar. 1. Fee, \$5.00.

Speed—Reasonable and proper. Not to exceed 20 miles per hour where built up; 30 miles per hour elsewhere; 8 miles per hour on curves.

Non-Residents—Reciprocal, provided no regular place of abode is acquired for more than 3 consecutive months.

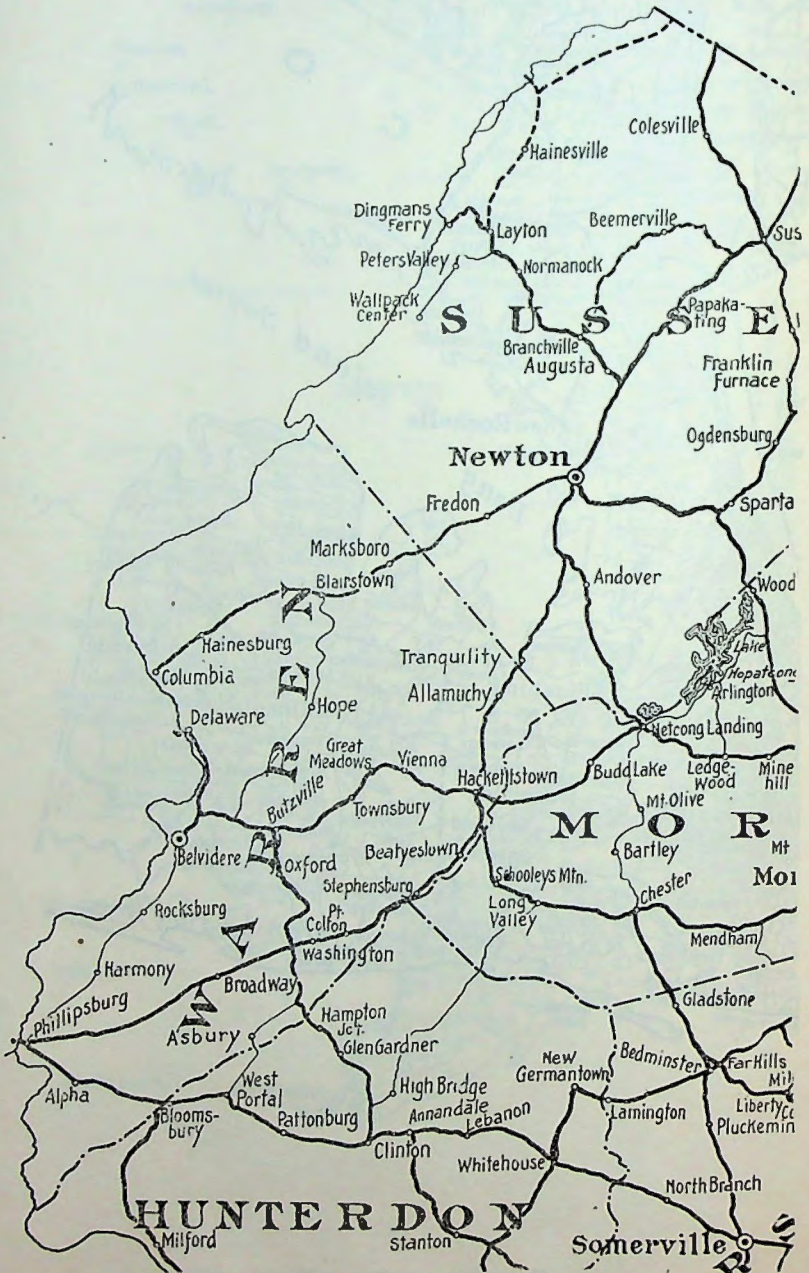
PLATE 1

Key Map of New York, New Jersey and Pennsylvania, showing plate numbers of various sections.



NEW JERSEY — PLATE 40

For connecting sections, see Plates 34 & 35.



For connecting sections, see Plates 58 & 68.

For connecting section, see Plate 41.

For connecting sections, see Plates 42 & 78.

NEW JERSEY — PLATE 42

For connecting section, see Plate 40.



For connecting sections, see Plates 44 & 78.

For connecting section, see Plate 43.

For connecting section, see Plate 45.

NEW JERSEY—PLATE 43

For connecting section, see Plate 41.



For connecting section, see Plate 42.

For connecting section, see Plate 46.

NEW JERSEY — PLATE 44
For connecting section, see Plate 77.



For connecting section, see Plate 77.

For connecting sections, see Plates 42 & 45.

NEW JERSEY — PLATE 45

For connecting section, see Plate 42.

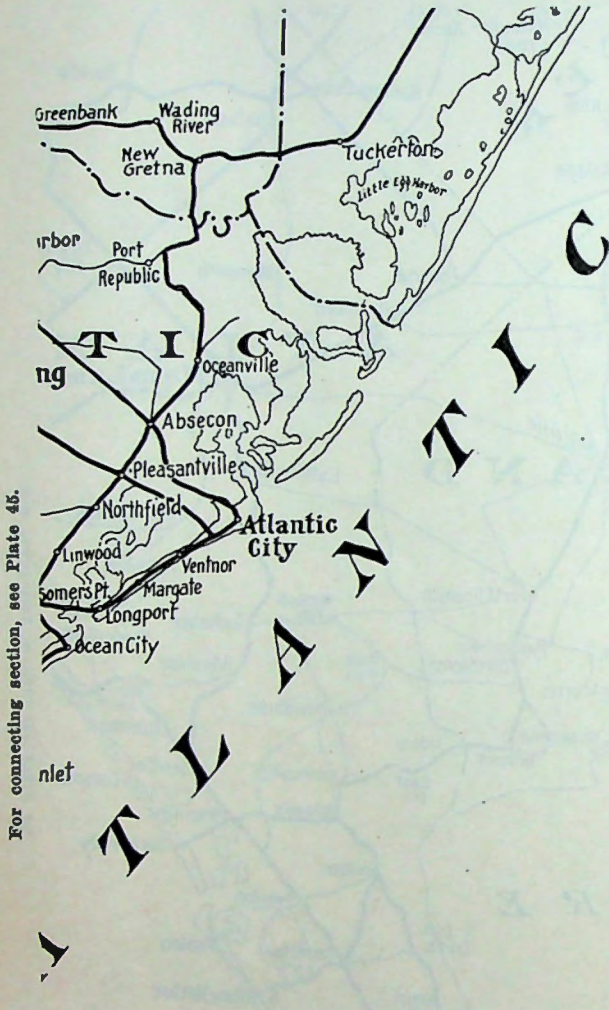


For connecting section, see Plate 44.

For connecting section, see Plate 46.

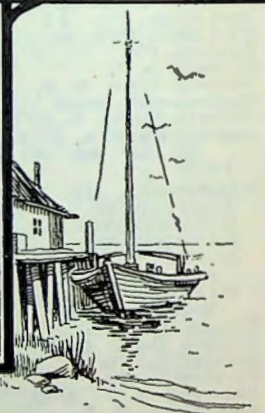
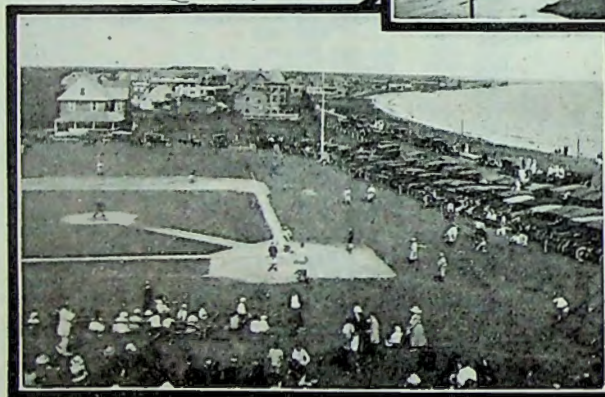
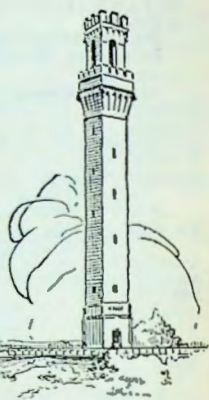
NEW JERSEY — PLATE 46

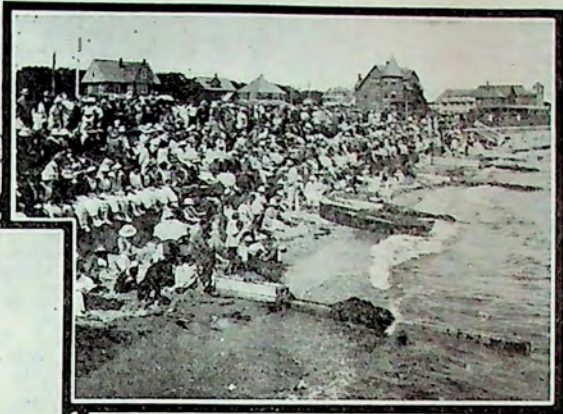
For connecting section, see Plate 43.



For connecting section, see Plate 45.

Cape Cod





Cape Cod

UNIQUE in its picturesque beauty. Cosmopolitan in the comforts provided by its hospitable hotels, good roads, golf courses, and yacht clubs. The paradise alike of the artist, the sportsman and the tired business man. A land of permanent homes. Those fortunate ones who have lived on the Cape are never content to live elsewhere.

The Cape is a good place to enjoy living.



New England



Winter Sports

Your health, pleasure and recreation impulses demand a wintertime vacation. A hundred or more resorts in New England offer exactly what you want, ice fishing, snowshoe trailing, skiing, ski sledding, ski jumping, ski-joring, ski bobbing, skating, hockey, curling and a score of ice games, sleighing, sledding, tobogganing and a hundred snow games.

For illustrated booklet and information
address

**NEW ENGLAND WINTER SPORTS
COMMITTEE**

Chamber of Commerce, Boston, Mass.

