

# Hopewell Photography Collections

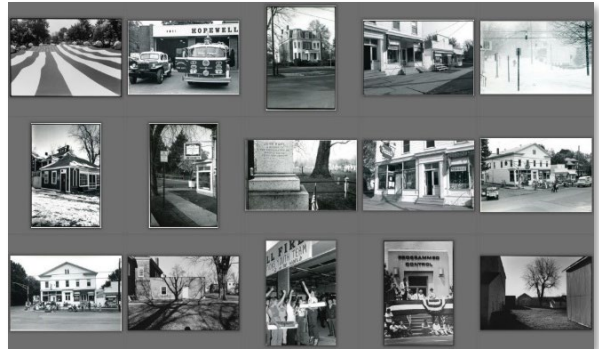
Rev. 3/23/24 - D. Dixon - Add Harry Abendroth (8/5/2023 Saretzky Legion Carnival)

See also the Anthracite Railroads Historical Society (ARHS) collection

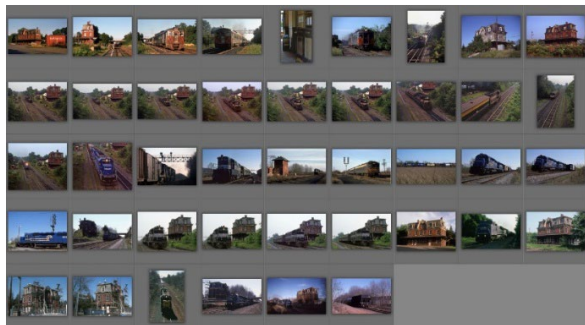
Collections of photographs by local Hopewell area photographers, with artist information.



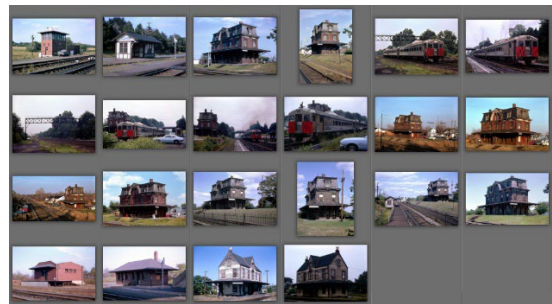
**Kenneth Kaplowitz**  
**Hopewell Borough, 1974 - 1977**  
 35 black and white photographs  
 of Hopewell people and places



**Gary Saretzky**  
**Hopewell Borough, 1978 - 1980**  
 29 black and white photos of Hopewell scenes  
 including the American Legion Carnival



**Ralph Curcio**  
**Hopewell & Pennington Train Stations**  
**1976 - 1999**  
 42 photos of train stations  
 with passenger and freight trains

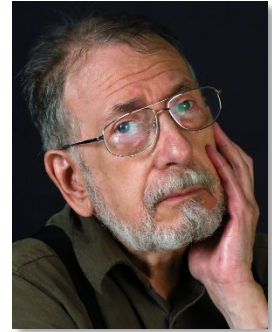


**Harry Abendroth**  
**Hopewell, Pennington, etc. Train Stations**  
**1963 - 1976**  
 22 photos of Hopewell and Pennington stations,  
 plus Belle Mead and Weston-Manville

## Ken Kaplowitz - Hopewell Borough - 1974 - 1977

A collection of 35 black and white photographs of Hopewell Borough people and places from 1974 to 1977, contributed by local photographer Kenneth Kaplowitz.

Kaplowitz is Emeritus Professor from The College of New Jersey, where he taught for forty-nine years from 1970 to 2020. He has taught communications, film-making, TV production, life-drawing, painting, photo history, performance art and photography.



Kaplowitz also works in prints and drawings. See his website for more information and works - <https://www.kennethkaplowitz.com/>

### Kaplowitz Collection

Most of these photos are portraits of local people, especially in the context of their lives and places - on the front porch, in the street, in front of their business, and inside their store. There are also views of group events including Memorial Day parades, snowball fights, making the Bicentennial Quilt, boarding the school bus, diving at the quarry, and just hanging on the corner.



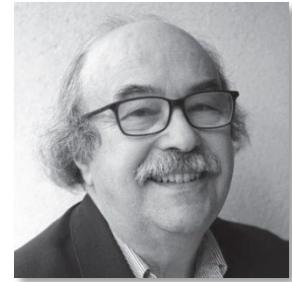
Kaplowitz Images

The Kaplowitz images are dated and described in the file names, and summarized here with the image number, date, street address, place name, and people in the photos.

#	Date	Street	Addr	Place	People
00	1976	Poster		NJ State Museum	30 Photos - June 5 - Aug 29, 1976
01	1974	Railroad	002	Hw Train Station	(used in poster)
02	1975	Broad		Trike	Leon Hill, dog Taffy
03	1975	Hart	027	Porch	Ken Kaplowitz
04	1975	Columbia	004	Firehouse	Voting - Edward Hall
05	1976	Railroad	001	Cliff's Corner Store	Lillian & Clifford Skubus, Lorraine Alexander painter
07	1976	UNK		Hw Bicentennial Quilt	Ann Asaro L, Judy Grow R
08	1976c	W Broad	001	Hopewell Pharmacy	Pharmacist George Neely (partners w/ Leonard Caputo)
09	1975	W Broad	001	Hopewell Pharmacy	at Greenwood
10	1975	Blawenburg	518	Dairy Queen	at 601 / Great Road
11	1975	Van Dyke	044	Legion Carnival	Woody & Robby Wyckoff, Ricky Kuntz
12	1975	Mercer	001	Somerset Farms	Edward & Eric Jon Sisco
14	1976c	Broad	east	Corn Field	
15	1976	W Broad	130	Tom's Auto Repair	Tom McCandless
22	1975	Broad		Memorial Day Parade	Nelson Coleman, fireman
23	1975	Columbia	004	Firehouse	Police Chief Robert Dodson, Jimmy Roman
24	1977	Broad		Memorial Day	Marvin Friedman, home
25	1975			Home	Alice B Lewis
26	1974	Railroad	002	Mini Park	Snow Kids (Front St behind)
27	1975	E Broad	062	Princeton Bank	Samuel K. Hunt, VP
28	1975	W Broad	045	Jeweler	Harold Pakman
31	1976c	W Broad	007	Village Market	Kids - Bev Chun top center
32	1975	W Broad	071	Halloween	Pumpkin person
33	1975	W Broad	001	Hopewell Pharmacy	Bettina Trepaso (Tiny)
34	1975	Railroad	043	Hills Lumber	Herbert Waldron (b. Hw 1929, Columbia)
35	1975	Railroad	043	Hills Lumber	Arthur M. Wright, Joseph Hill
36	1974	E Broad	038	Sunoco	Tom Nichols, '61 Chrysler Newport
37	1975	W Broad	007	Village Market	Angelo Pagano, Joseph Dorio
38	1975	W Broad	043	Allen's Flowers	Don, Shirley Allen
51	1976c	Crusher	180	Quarry Swim Club	Bathers
52	1975	E Broad	023	Coxs Barber Shop	Joseph Quinn barber, Dale Bussis
53	1975	N Greenwood	054	Summer School Bus	(Hart Ave)
54	1975	Broad	east	Trees	shadow
55	1976	W Broad	003	Memorial Day Parade	Meg Asaro
56	1975	Seminary	017	Hw Country Store	Paul & Rita Ehrlich

## Gary Saretzky - Hopewell Borough - 1978 - 1980

A collection of 29 black and white photographs of Hopewell Borough from 1978 to 1980 contributed by Gary Saretzky, which also provide a record of the buildings and businesses of the time. Saretzky lived in Hopewell from 1977 to 1980, when he created these photographs, and also printed postcards with local scenes and published a book of Hopewell photos.



Saretzky is an archivist, photographer, and educator who was Archivist of Monmouth County from 1994 to 2019, and taught photography at Mercer County Community College for 35 years. He has been researching 19th century New Jersey photographers for more than thirty years, has published more than 100 articles, and lectures on the history of photography and preservation of photographs.

See his Saretzky Online website (<https://saretzky.com>) for more on his photography, research, talks, and exhibitions. His website includes an online photo book store, with more than 1000 titles for sale, including monographs, histories, exhibition catalogs, and photographic art periodicals. Copies of his 1980 work, *Some Photographic Views of Hopewell, New Jersey*, are still available, which includes ten photographs around Hopewell.

### Saretzky Hopewell Collection

Saretzky has an eye for both the buildings and the people of the borough, focusing in to catch details and carefully composing the angles. His images also capture some now-lost views of 1980s Hopewell.



The Saretzky images are dated and described in the file names.

For example, photos in the second row:

- Soupe du Jour - Early view of the building in the snow, positioned to highlight the wonderful profusion of angles of the Italianate building behind, at East Broad and Blackwell.
- Chubbys Luncheonette - Focuses on the corner of the building and the Jane Logan Ice Cream sign, with the Mini Park sign peaking out across the street.
- John Hart's Grave - Focuses in to the inscription on the familiar memorial, and shows the graveyard stretching beyond framed by the tree.
- Rexall Drug Store - Set also showing the Hopewell Variety five and dime in the right half of the building (now also the Hopewell Pharmacy) and the Hopewell Village Market in the next building.

### Saretzky Legion Carnival Collection

Six of the Saretzky photographs show scenes at the 1978 American Legion Carnival.

This annual event was held at the post home of Hopewell Valley American Legion Post 339, on Van Dyke Road in Hopewell Township. In the 1960s and 1970s the Carnival was held on six days across two consecutive weeks, on Thursday, Friday, and Saturday evenings, from 7 pm to midnight. The event included kiddie rides, amusements, refreshments, and free dancing to live music.

These black and white photos of the 1978 Carnival focus on the people at the event – in the crowd, and working the booths for games and food.



## Ralph Curcio - Hopewell & Pennington Train Stations - 1976 - 1999

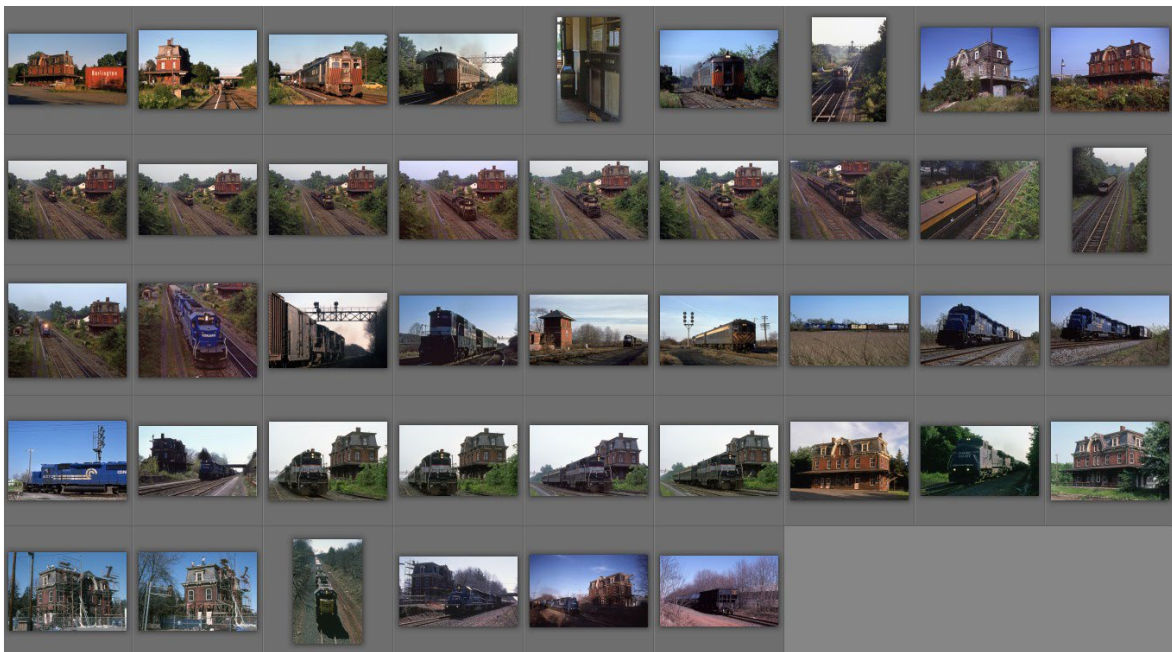
A collection of 42 photos of Hopewell area train stations and trains by Ralph Curcio (1949 - 2012), an avid enthusiast of transportation and photography who shot some 10,000 photos of trains and trolleys. Curcio was a Lawrence resident who spent his entire career at The Times of Trenton, working his way over four decades from librarian and copy editor to editor of the community page.

This collection was donated by Daniel McFadden, Curcio's longtime friend, who took over his impressive photographic collection and has been scanning and sharing the images. For example, the New York Transit Museum's Ralph Curcio collection contains over 2,500 images. McFadden is continuing to look for Hopewell area material for us.

The collection contains images shot from August 1976 through March 1999. Most are around the Hopewell train station, with others in Pennington and the switching area north of the Pennington station. These include views of the stations from different perspectives, trains and passengers at the stations, and both passenger and freight trains on the tracks.

### Curcio Collection

The Curcio images are dated and numbered in the original file names, which have been augmented with descriptions of the location and content. The full list of images below also includes notes on railroad features visible in the photos.



#### **1976-08-03 (5) Hopewell Station with SEPTA morning passenger train, Phila. to NY (3 cars)**

[2 tracks + siding - Greenwood bridge, 2 signal bridges, signal wires on north side]

24- Station front - with boxcar on siding

25- Station with passengers waiting for arriving train - south side passenger track

27- Passengers boarding train

29- Departing train to NY under signal bridges ("Reading Company")

30- Station interior facing south to parking lot from waiting room door

- 1977-05-26 (1) 12- UNKNOWN station? - train around curve - (2 cars)**
- 1981-08-21 (1) 16 - Hopewell Station - Evening NJT passenger train from NY (eng. + 2 cars)**  
[2 tracks + siding, signal tower, 2 signal bridges, signal wires on north side]
- 1981-08-23 (1) 29- Pennington Station from tracks**
- 1981-08-26 (1) 31- Hopewell Station - from across the tracks**  
[graffiti on station, Hopewell sign with light]
- 1981-08-28 (11) Hopewell Station - Evening NJT passenger train arriving from NY**  
[2 tracks + siding, 2 signal bridges] - (engine 5908 + 2 cars)  
[north side: Passenger shed, signal tower]  
[south side: Freight shed (lumber), FCA]  
25,26- Arriving into station - shot from bridge, facing east  
27,30,31,32- Passengers disembarking at station  
34- Train leaving station - from bridge, facing east  
35,36- Train leaving station - from bridge, facing west (Model Ave.)  
**Hopewell Station - Conrail freight train from NY - 6461 - on north side freight track**  
37,38- Freight train passing station
- 1982-04-02 (1) 27- Pennington North - Freight train - signal bridge (facing east)**  
[East of Rt. 31, area opposite of Woosamonsa Road]  
[Poles with signal wires on west (freight) side]  
[N Main Street bridge to south]  
[Trap Rock bridge to north - across to west of 31]
- 1982-04-22 (3) Pennington North - Passenger train - 5907 (engine + 2 cars)**  
29 - Under signal bridge  
34 - Passing Glenmoore signaling equipment tower  
37 - Rear - past signals, bridge in distance
- 1982-04-29 (4) 17,18,20,21- Pennington North - Conrail freight train 6372**
- 1982-04-29 (1) 22- Hopewell Station - Conrail freight train 6372 passing station**
- 1982-06-01 (4) 4-7- Hopewell Station - Evening NJT passenger train at station (engine+ 2 cars)**  
[2 tracks + siding, 2 signal bridges, Greenwood bridge]
- 1995-12-00 (2) 01- Hopewell Station - View from front - boarded windows and doors**  
**11- Conrail freight train 6200 (near Hopewell) - 1 track**
- 1996-06-00 (1) 25- Hopewell Station - View from across the tracks**  
[boarded windows and doors - corner Blackwell Ave. behind]
- 1999-03-00 (6) Hopewell Station being rehabbed, scaffolding on front [1 track]**  
34,35 - Roof work, from front left  
36- CSX freight train 6223 to distance [single track]  
37- Conrail freight train 6463 passing station - to NY  
38,39- Conrail freight train 6063 passing station - from NY - front & back

## Harry Abendroth - Hopewell & Pennington Train Stations - 1963 - 1976

A collection of 22 photos by Harry Abendroth, documenting local train stations in the 1960s and 70s through the decline and end of local passenger train service. These images focus on the Hopewell Borough and Pennington Borough train stations, and also include views of the Belle Mead and Weston-Manville stations.

Harry Abendroth is a life-long train enthusiast and almost life-long railroad photographer. Beginning in 1962 with a Brownie box camera, he has enjoyed documenting various aspects of the railroad industry, in particular the railroad stations that once served the Reading and Jersey Central Railroads. A retired electric utility engineer, Harry currently resides near Bangor, PA with his wife Davida, his devoted dog Winston and his diva cat Rachel.

### Abendroth Collection

These images focus on the station buildings and associated structures, plus trains in service and overall views of the tracks and adjoining properties.



- 14 photos of the Hopewell train station from 1963, 1974, and 1976, including overall views of the train station complex, plus detailed views of the Hopewell station, passenger shed, and HOPE tower, plus trains and passengers at the station.
- 4 photos of the Pennington train station from 1963 and 1970, with a view of the station complex plus detailed views of the station. Includes views of the semaphore signals used for "flag stops."
- 2 photos of the Belle Mead train station from 1963, showing the smaller brick station building on the eastbound side and the freight station building.
- 2 photos of the Weston-Manville train station from 1969 and 1974., showing different views of the wood building.